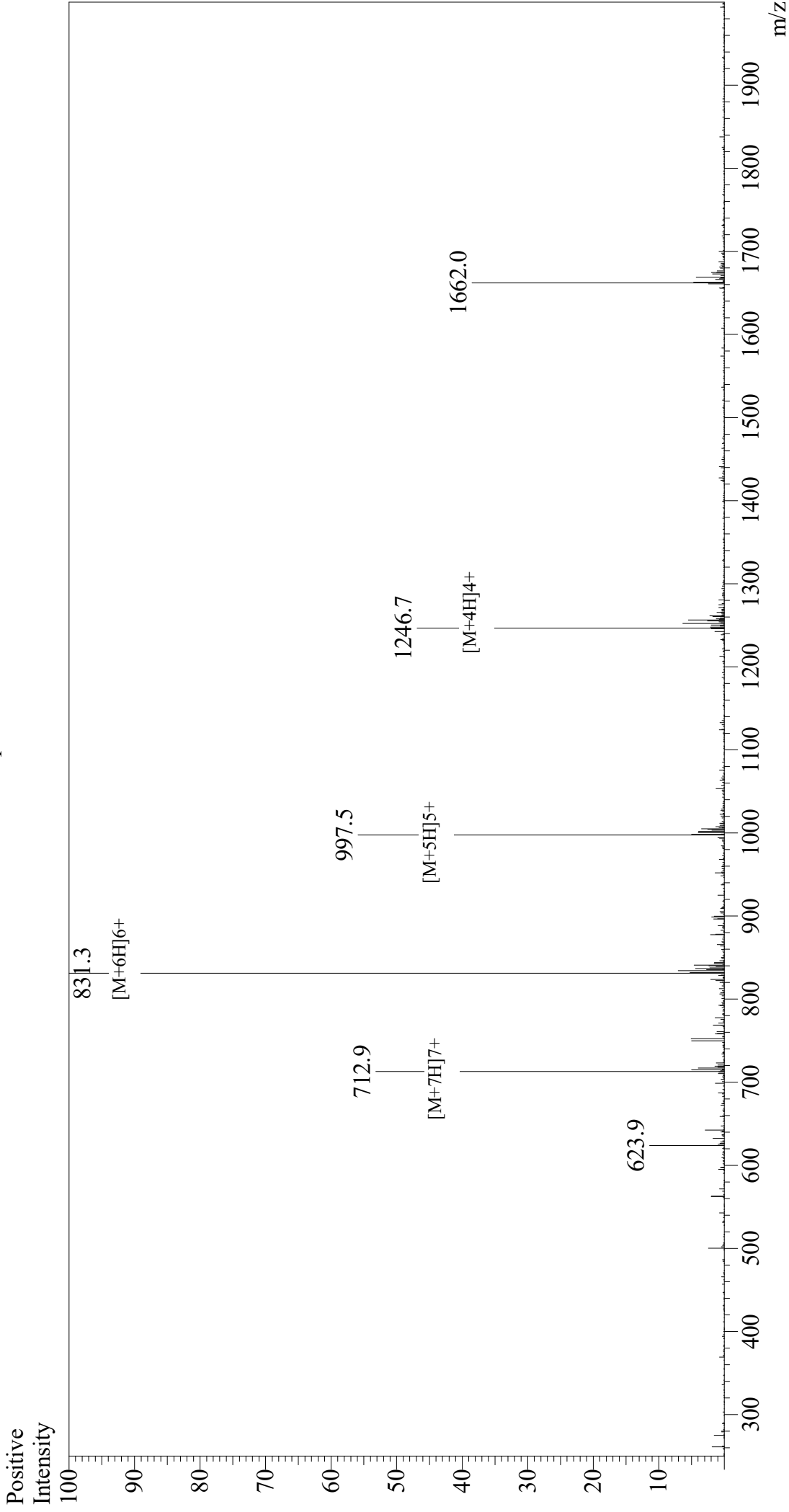


Mass Spectrum



Sample Information

Month-Day Processed : 01/15/21
Time Processed : 8:32:02 AM
Injection Volume : 0.3
Sample Name : Gastric Inhibitory Peptide (GIP), human
Cat No. : RP10795
Lot No. : E7091921A
Theoretical MW : 4983.60
Observed MW : 4981.8

Interface : ESI
Nebulizing Gas Flow : 1.5 L/min
CDL Temp : 250
Block Temp : 200

Equipment : GK11010007
Interface Bias : +3.5 kV
Drying Gas Flow : 5 L/min
T.Flow : 0.2 ml/min
B.conc : 50% H₂O/50% MeOH