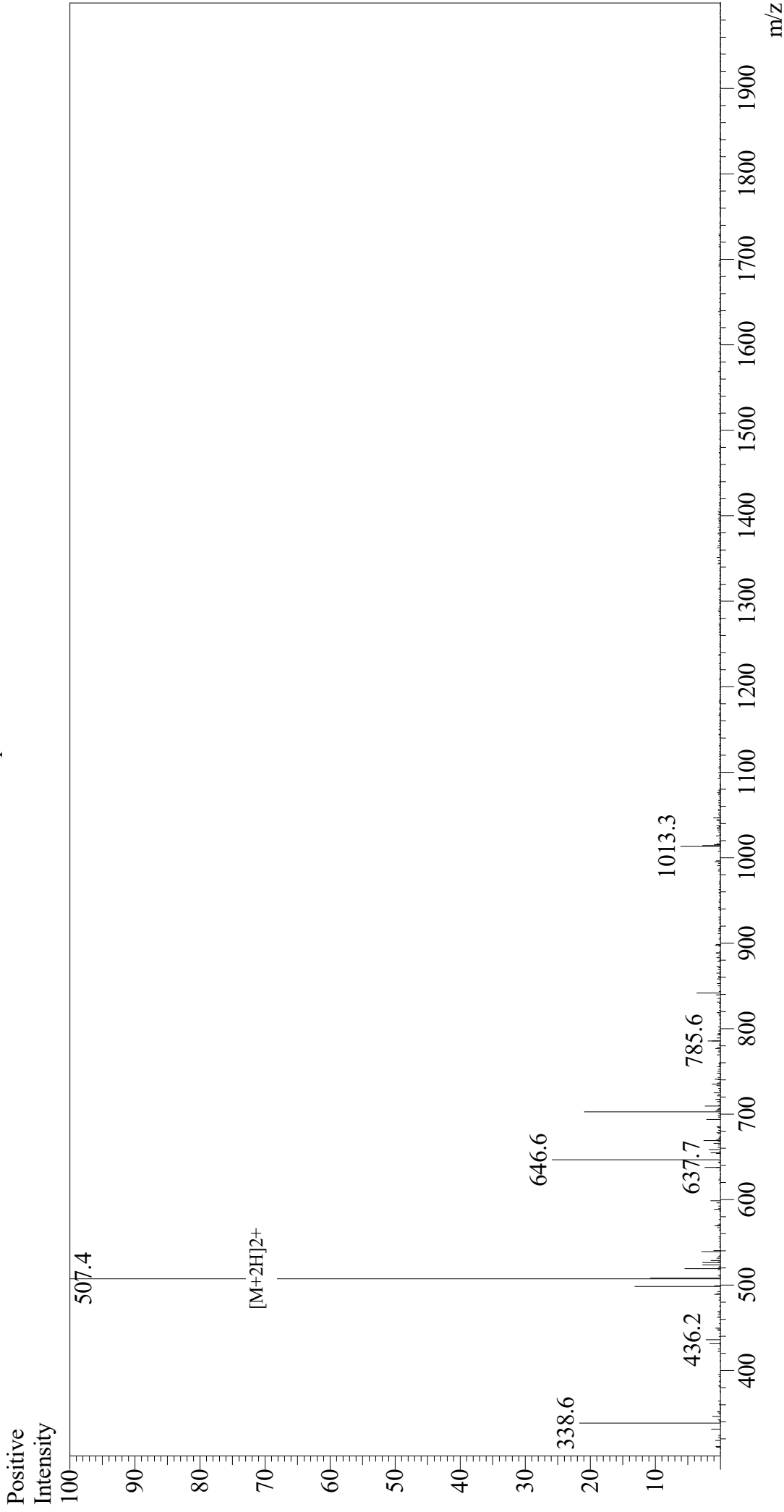


Mass Spectrum



Sample Information

Acquired by: Gary
Month-Day Processed: 08/24/19
Time Processed: 08:10:27 PM
Injection Volume: 0.3
Sample Name: DYKDDDDDK Peptide
Cat. No.: RP10586
Lot. No.: E2540519H
Theoretical MW: 1012.98
Observed MW: 1012.8

Interface: ESI
Nebulizing Gas Flow: 1.5L/min
CDL Temp: 250
Block Temp: 200

Equipment: GK11010007
Interface Bias: +4.5 kV
Drying Gas Flow: 5 L/min
T.Flow: 0.2 ml/min
B.conc: 50% H2O/50% MeOH