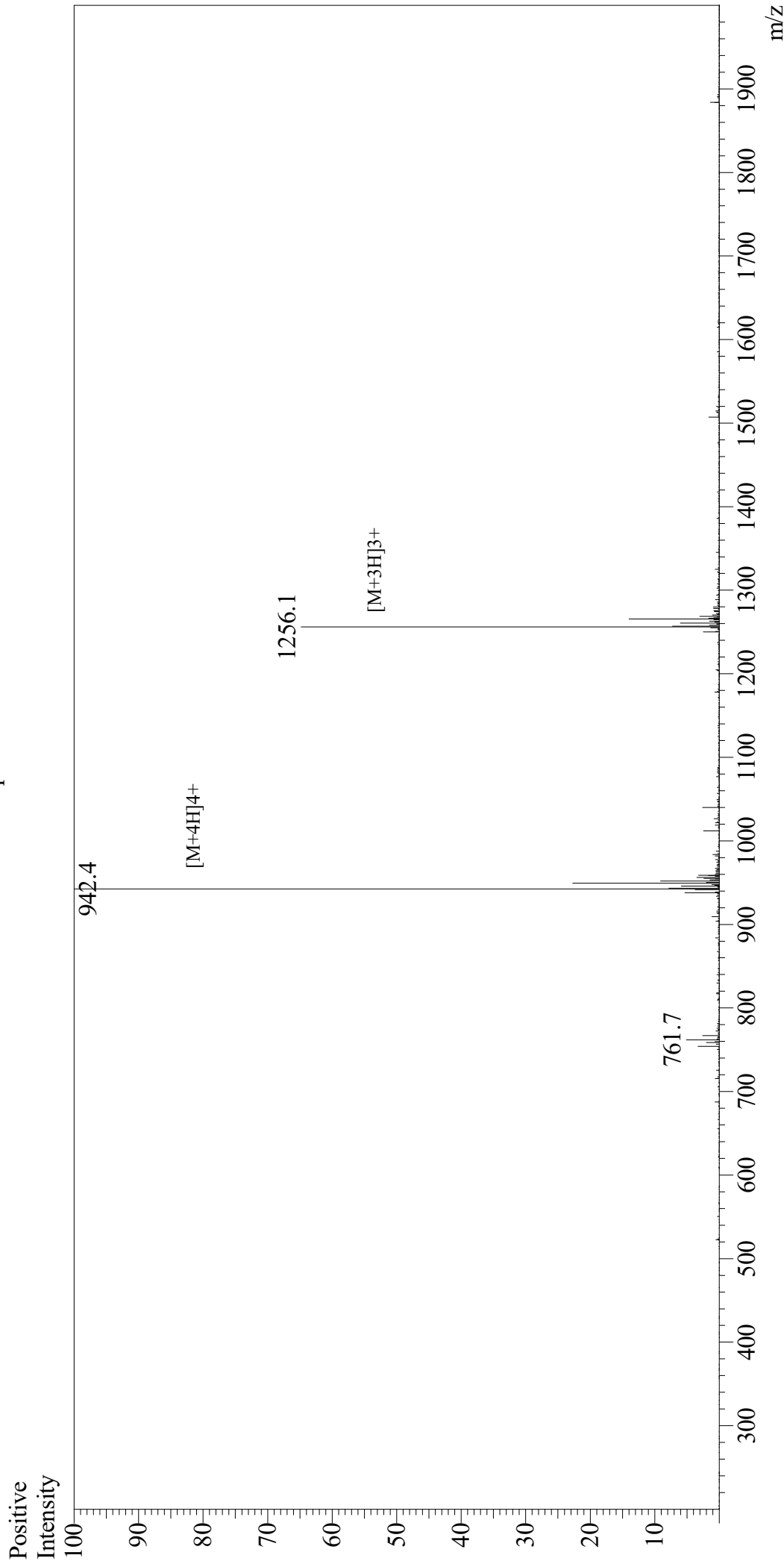


Mass Spectrum



Sample Information
Month-Day Processed : 08/19/20
Time Processed : 03:05:18 PM
Injection Volume : 0.4
Sample Name : Glucagon-Like Peptide (GLP) II, human
Cat No. : RP10769
Lot No. : E4543920H
Theoretical MW : 3766.20
Observed MW : 3765.6

Interface : ESI
Nebulizing Gas Flow : 1.5L/min
CDL Temp : 250
Block Temp : 200

Equipment : GK11010007
Interface Bias : +4.5kV
Drying Gas Flow : 5 L/min
T.Flow : 0.2ml/min
B.conc : 50%H₂O/50%MeOH