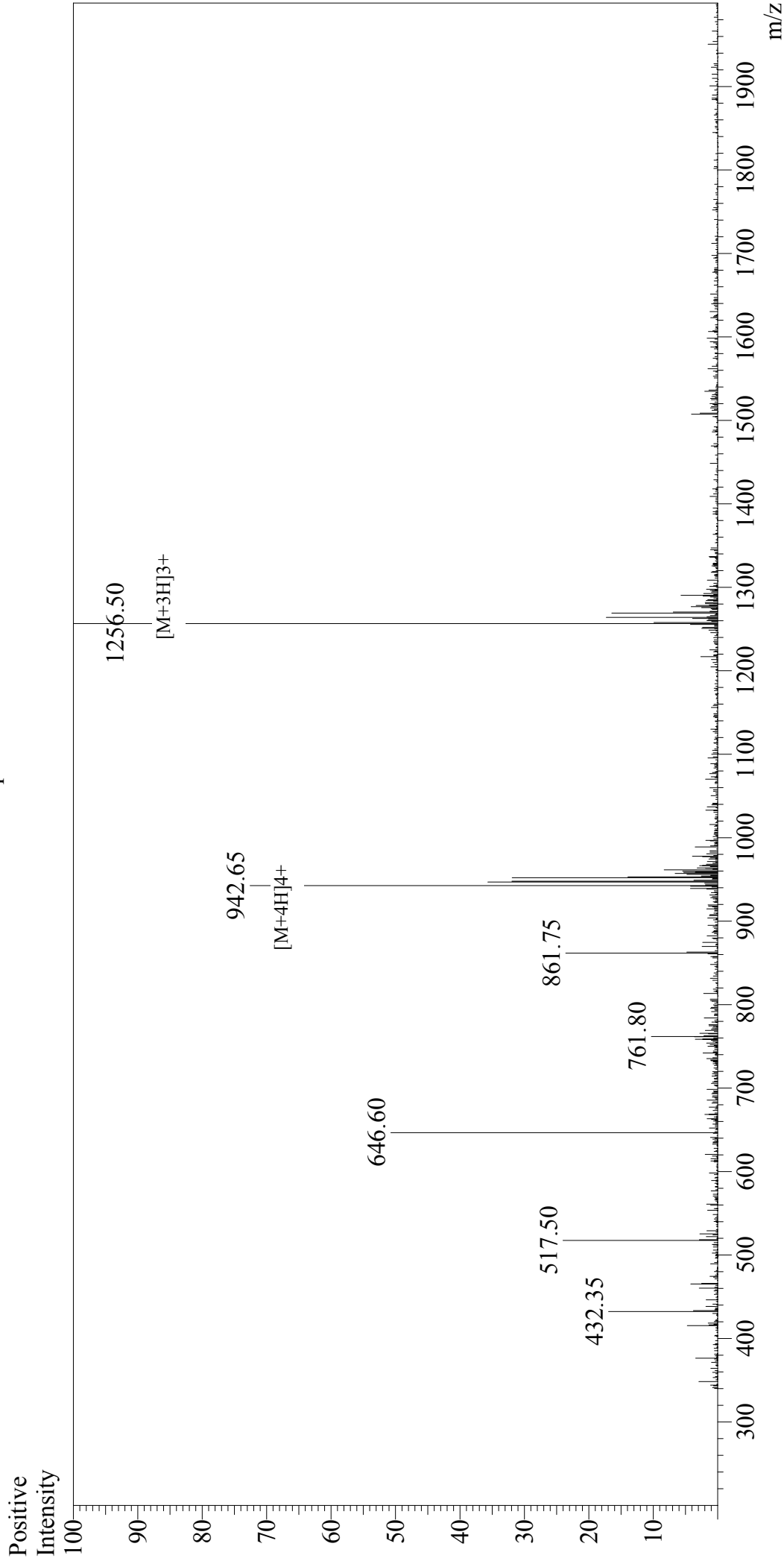


Mass Spectrum



Sample Information

User : Gary
Month-Day Processed : 03/23/18
Time Processed : 9:38:42
Injection Volume : 0.2
Sample Name : RP10769
Cat No. : PE6751803
Lot No. : 3766.20
Theoretical MW : 3766.50
Observed MW :

Interface : ESI
Nebulizing Gas Flow : 1.5L/min
CDL Temp : 250 °C
Block Temp : 200 °C

Interface Bias : +4.5kV
Drying Gas Flow : 5 L/min
T.Flow : 0.2ml/min
B.conc : 50%H2O/50%MeOH