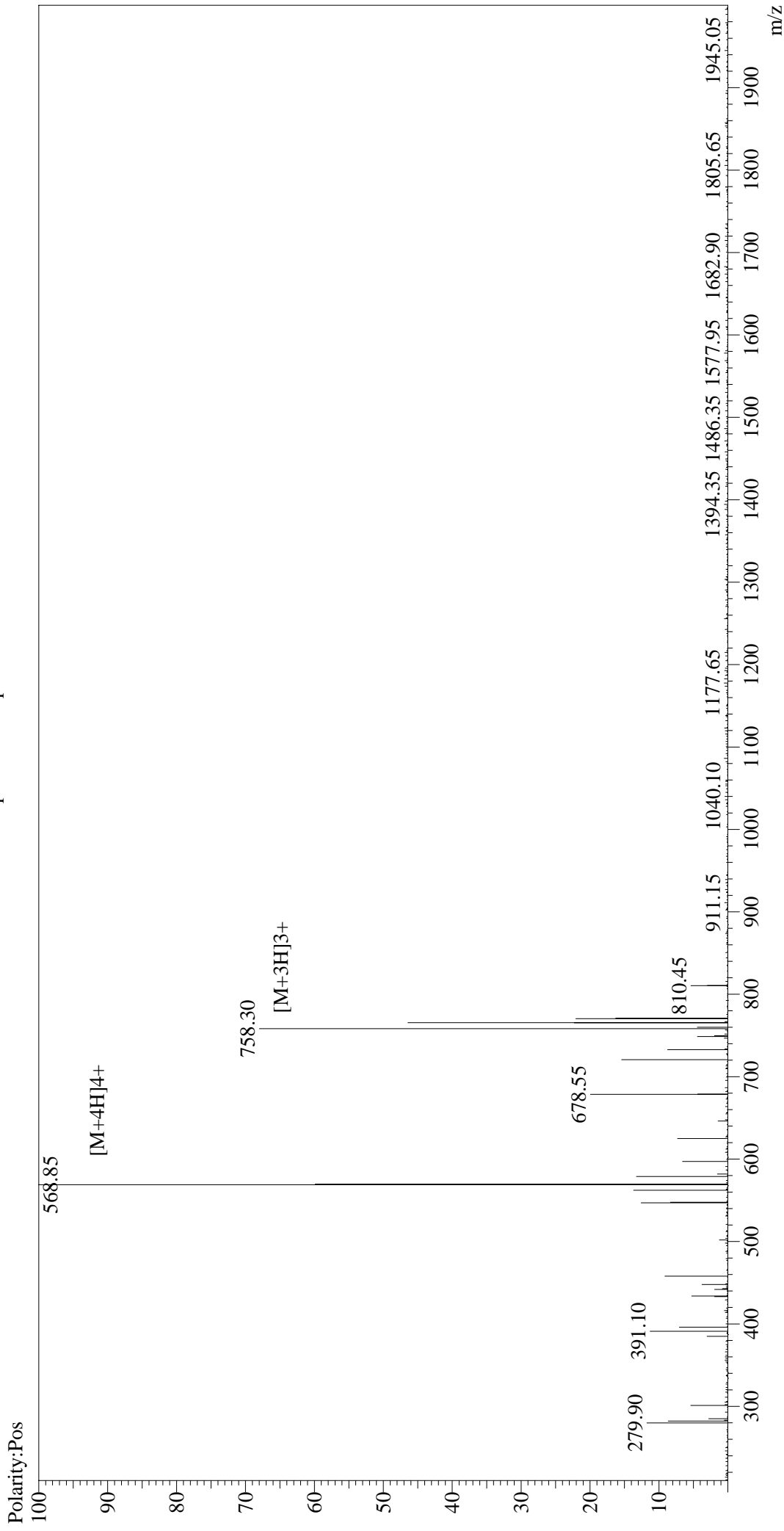


# MS Spectrum Graph



## Sample Information

Acquired by : Admin  
 Date Acquired : 2016-12-26 15:18:11  
 Injection Volume : 1  
 Sample Name : Flagelin22  
 Cat No. : RP19986  
 Lot No. : PE3131611  
 Theoretical MW : 2272.49  
 Observed MW : 2271.40

## Interface :ESI

Interface Bias : +4.5 kV  
 Nebulizing Gas Flow : 1.5L/min  
 Drying Gas Flow : 5 L/min  
 CDL Temp : 250°C  
 T.Flow : 0.2 ml/min  
 Block Temp : 200°C  
 B.conc : 50%H<sub>2</sub>O/50%MeOH