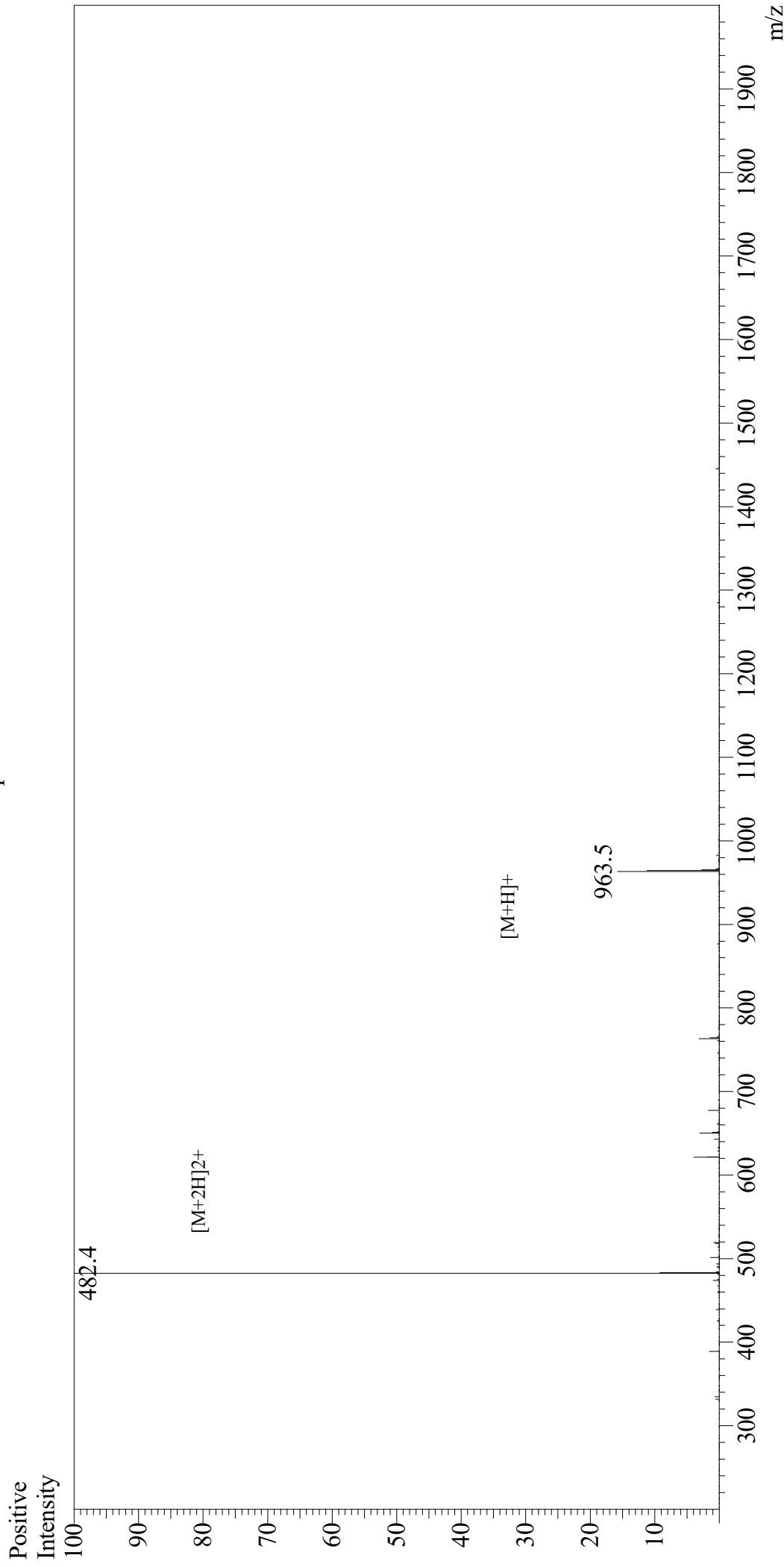


Mass Spectrum



Sample Information
Month-Day Processed : 08/20/20
Time Processed : 10:13:48 AM
Injection Volume : 0.3
Sample Name : OVA Peptide (257-264) (For CN. Use Only)
Cat No. : RP10611
Lot No. : E839220H
Theoretical MW : 963.13
Observed MW : 962.8

Interface : ESI
Nebulizing Gas Flow : 1.5L/min
CDL Temp : 250
Block Temp : 200

Equipment : GK11010007
Interface Bias : +4.5kV
Drying Gas Flow : 5 L/min
T.Flow : 0.2ml/min
B.conc : 50%H₂O/50%MeOH