

Sample Name : Adrenomedullin (AM) (1-52), human  
 Cat. No. : RP11288  
 Lot. No. : PE1341611

Pump A : 0.065% trifluoroacetic in 100% water (v/v)  
 Pump B : 0.05% trifluoroacetic in 100% acetonitrile (v/v)  
 Total Flow:1 ml/min  
 Wavelength:220 nm

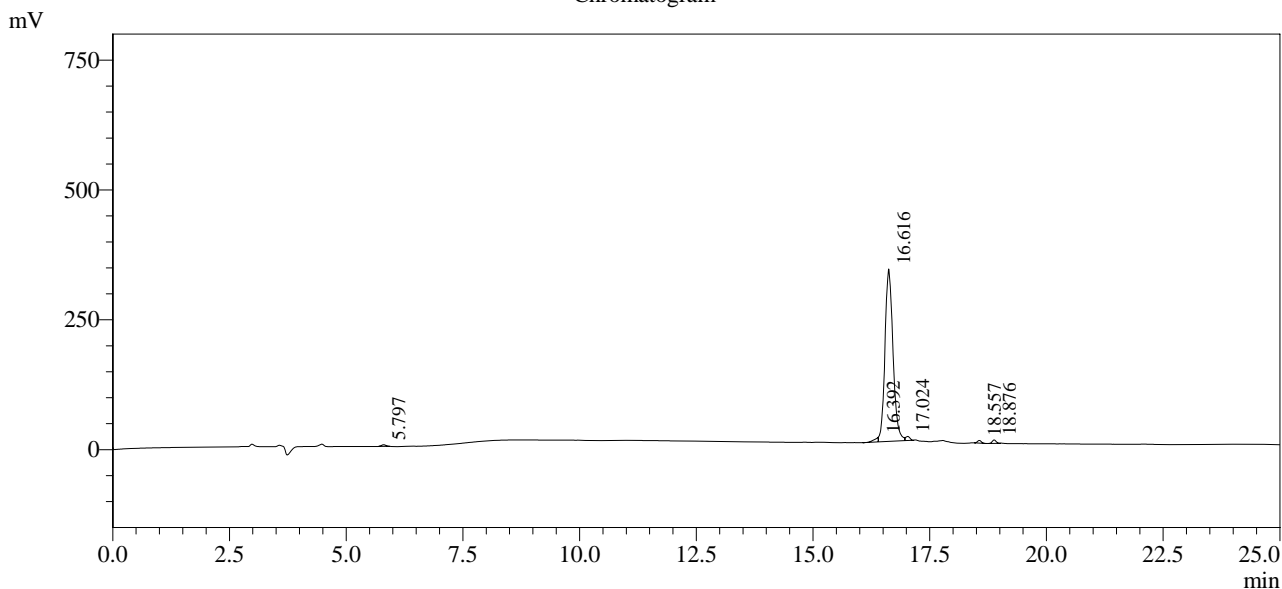
| Time  | Unit       | Command       | Value | Comment |
|-------|------------|---------------|-------|---------|
| 0.01  | Pumps      | Pump A B.Conc | 5     |         |
| 25.00 | Pumps      | Pump A B.Conc | 65    |         |
| 25.01 | Pumps      | Pump A B.Conc | 95    |         |
| 31.00 | Pumps      | Pump A B.Conc | 95    |         |
| 31.01 | Pumps      | Pump A B.Conc | 5     |         |
| 40.00 | Pumps      | Pump A B.Conc | 5     |         |
| 40.01 | Controller | Stop          |       |         |

<<Column Performance>>

<Detector A>

Column : Alltima™ C18 4.6 x 250 mm

Chromatogram



1 Det.A Ch1 / 220nm

Peak Table

Detector A Ch1 220nm

| Peak# | Ret. Time | Area    | Height | Area %  |
|-------|-----------|---------|--------|---------|
| 1     | 5.797     | 19936   | 3090   | 0.478   |
| 2     | 16.392    | 54644   | 8553   | 1.309   |
| 3     | 16.616    | 3981908 | 331791 | 95.418  |
| 4     | 17.024    | 49525   | 7861   | 1.187   |
| 5     | 18.557    | 29681   | 5168   | 0.711   |
| 6     | 18.876    | 37420   | 6629   | 0.897   |
| Total |           | 4173114 | 363091 | 100.000 |