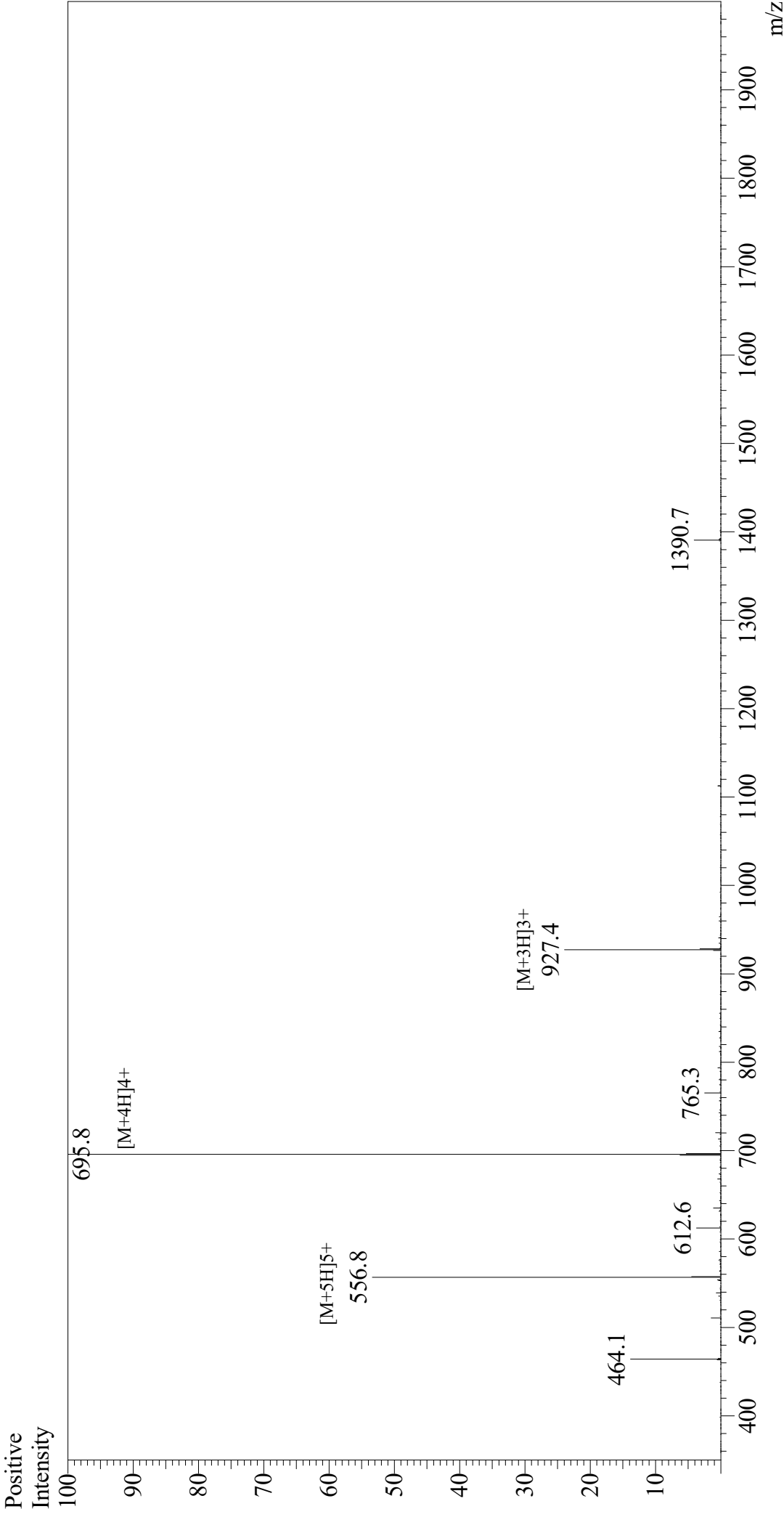


# Mass Spectrum



Sample Information  
Month-Day Processed : 04/19/21  
Time Processed : 7:30:08  
Injection Volume : 0.4  
Sample Name : LAH4  
Cat No : RP20096  
Lot No : E6723121D  
Theoretical MW : 2779.47  
Observed MW : 2779.2

Interface : ESI  
Nebulizing Gas Flow : 1.5L/min  
CDL Temp : 250  
Block Temp : 200

Equipment : GK11010007  
Interface Bias : +4.5 kV  
Drying Gas Flow : 5 L/min  
T.Flow : 0.2 ml/min  
B.conc : 50% H2O/50% MeOH