

Sample Name : Glucagon-Like Peptide (GLP) II, human
 Cat No.: RP10769
 Lot No.: E2877820B
 Time Processed : 5:28:09
 Month-Day-Year Processed : 03/09/2020

Pump A : 0.065% trifluoroacetic in 100% water (v/v)
 Pump B : 0.05% trifluoroacetic in 100% acetonitrile (v/v)
 Total Flow: 1 ml/min
 Wavelength: 220 nm

<<LC Time Program>>

Time	Module	Command	Value
0.01	Pumps	Pump A B.Conc	5
25.00	Pumps	Pump A B.Conc	65
25.01	Pumps	Pump A B.Conc	95
31.00	Pumps	Pump A B.Conc	95
31.01	Pumps	Pump A B.Conc	5
40.00	Pumps	Pump A B.Conc	5
40.10	Controller	Stop	

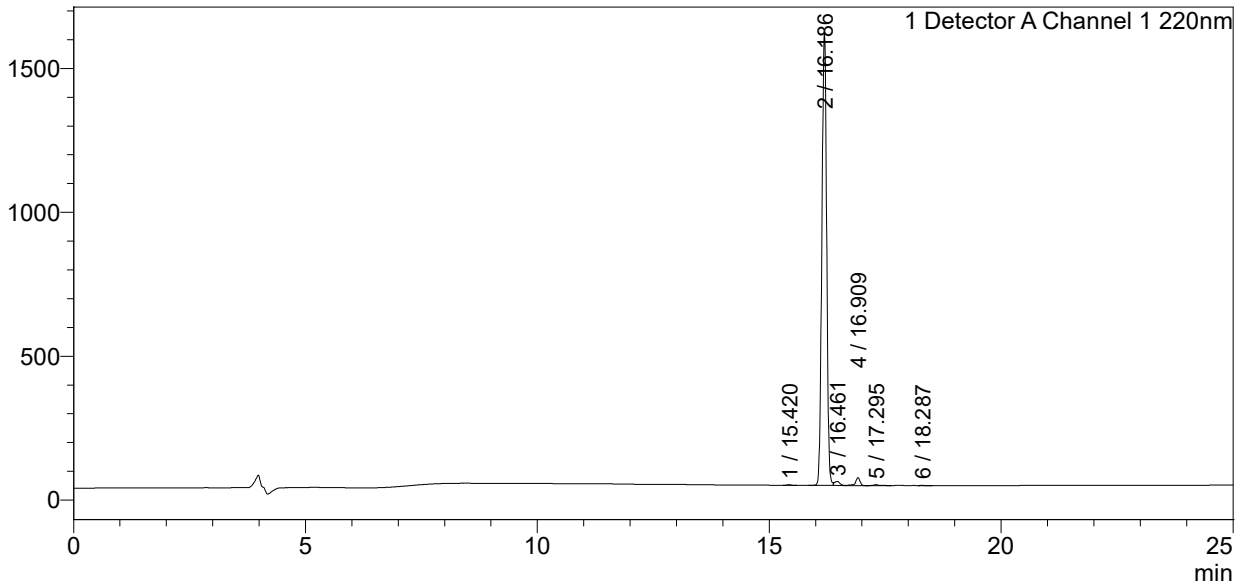
<<Column Performance>>

<Detector A>

Column : Inertsil ODS-3 4.6 x 250 mm
 Equipment: ZJ19010324

<Chromatogram>

mV



<Peak Table>

Detector A Channel 1 220nm

Peak#	Ret. Time	Area	Height	Area%
1	15.420	13380	2096	0.115
2	16.186	11251055	1572803	97.067
3	16.461	113665	14304	0.981
4	16.909	186353	27625	1.608
5	17.295	24129	3233	0.208
6	18.287	2469	436	0.021
Total		11591052	1620497	100.000