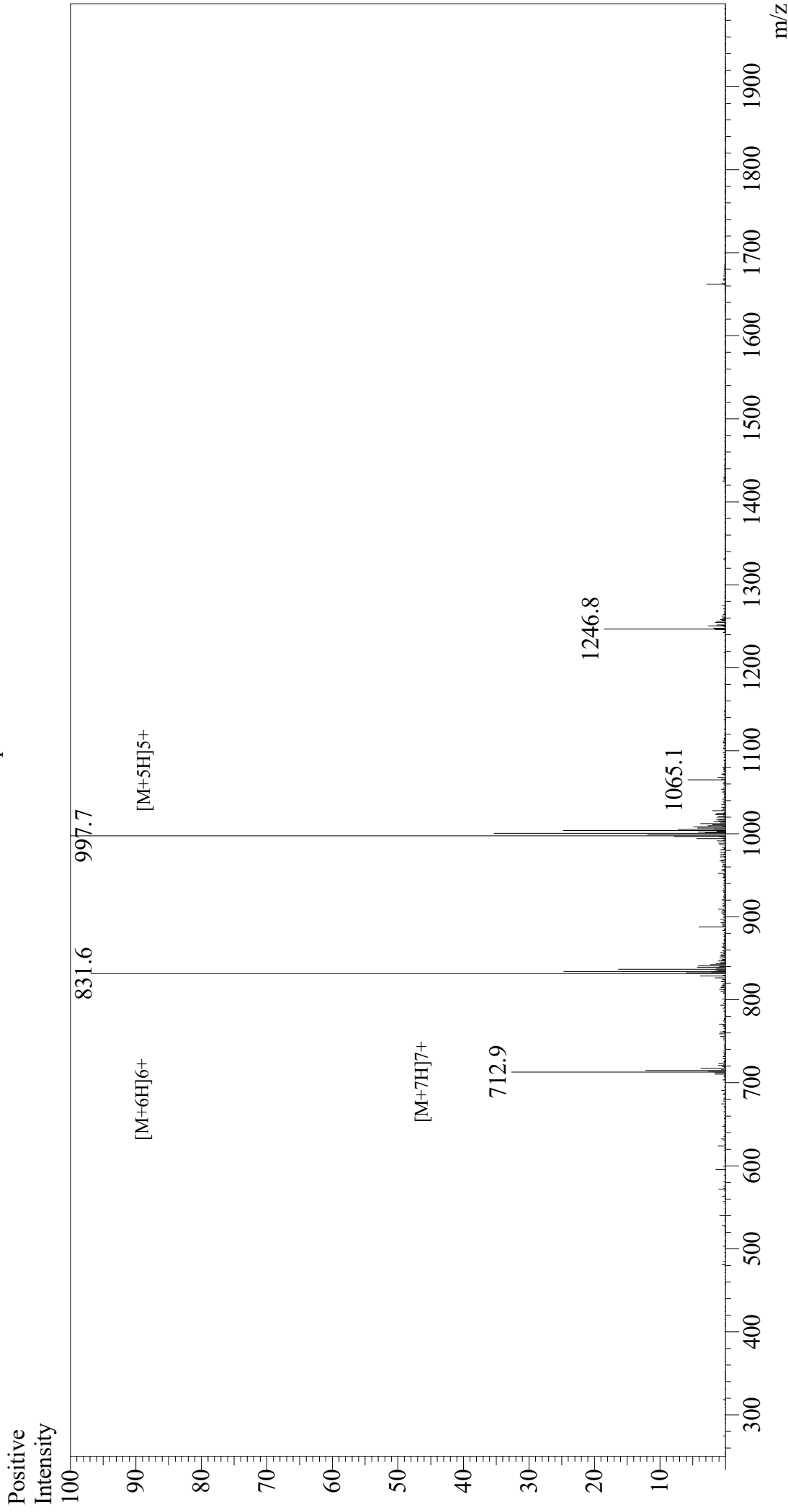


# Mass Spectrum



## Sample Information

Month-Day Processed : 06/29/21  
Time Processed : 9:41:15  
Injection Volume : 0.2  
Sample Name : Gastric Inhibitory Peptide (GIP), human  
Cat No. : RP10795  
Lot No. : E8357721F  
Theoretical MW : 4983.60  
Observed MW : 4983.5

## Interface

Interface : ESI  
Nebulizing Gas Flow : 1.5L/min  
CDL Temp : 250  
Block Temp : 200

## Equipment

Equipment : GK11010007  
Interface Bias : +3.5 kV  
Drying Gas Flow : 5 L/min  
T.Flow : 0.2 ml/min  
B.conc : 50%H2O/50%MeOH