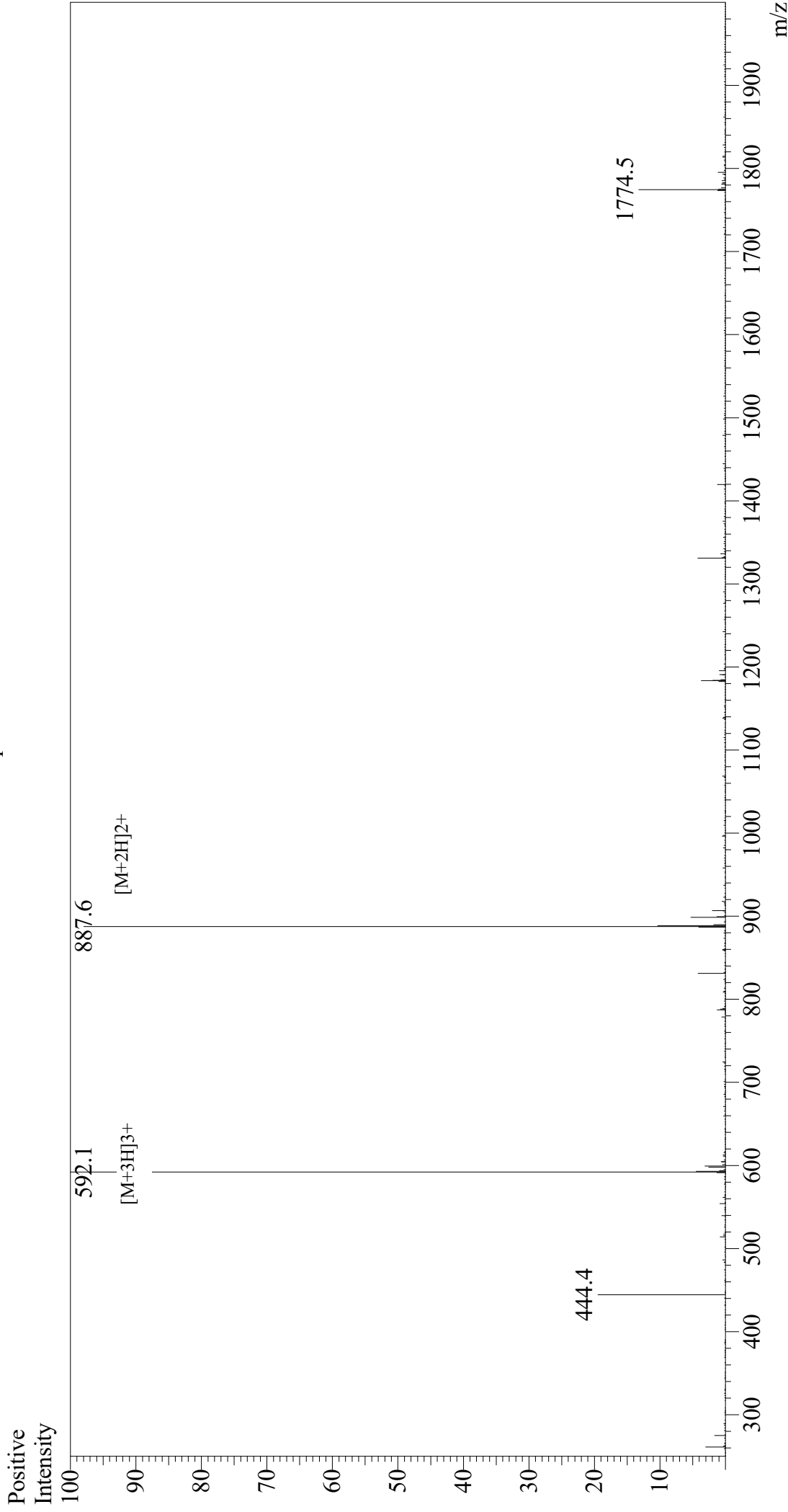


# Mass Spectrum



## Sample Information

Month-Day/Processed : 02/01/21  
Time Processed : 9:26:20 PM  
Injection Volume : 0.3  
Sample Name : OVA Peptide (323-339)  
Cat No. : RP10610  
Lot No. : E6214821A  
Theoretical MW : 1773.91  
Observed MW : 1773.3

Interface : ESI  
Nebulizing Gas Flow : 1.5L/min  
CDL Temp : 250  
Block Temp : 200

Equipment : GK11010007  
Interface Bias : +3.5 kV  
Drying Gas Flow : 5 L/min  
T.Flow : 0.2 ml/min  
B.conc : 50%H<sub>2</sub>O/50%MeOH