

Sample Name :β-Amyloid (1-42), human
 Cat No. : RP10017
 Lot No. : PE5321702

Pump A : 0.065% trifluoroacetic in 100% water (v/v)
 Pump B : 0.05% trifluoroacetic in 100% acetonitrile (v/v)
 Total Flow: 1 ml/min
 Wavelength: 220 nm

<<LC Time Program>>

| Time | Module | Command | Value |
|-------|------------|--------------|-------|
| 0.01 | Pumps | Pump B Conc. | 10 |
| 25.00 | Pumps | Pump B Conc. | 100 |
| 25.01 | Pumps | Pump B Conc. | 95 |
| 31.00 | Pumps | Pump B Conc. | 95 |
| 31.01 | Pumps | Pump B Conc. | 10 |
| 40.00 | Pumps | Pump B Conc. | 10 |
| 40.01 | Controller | Stop | |

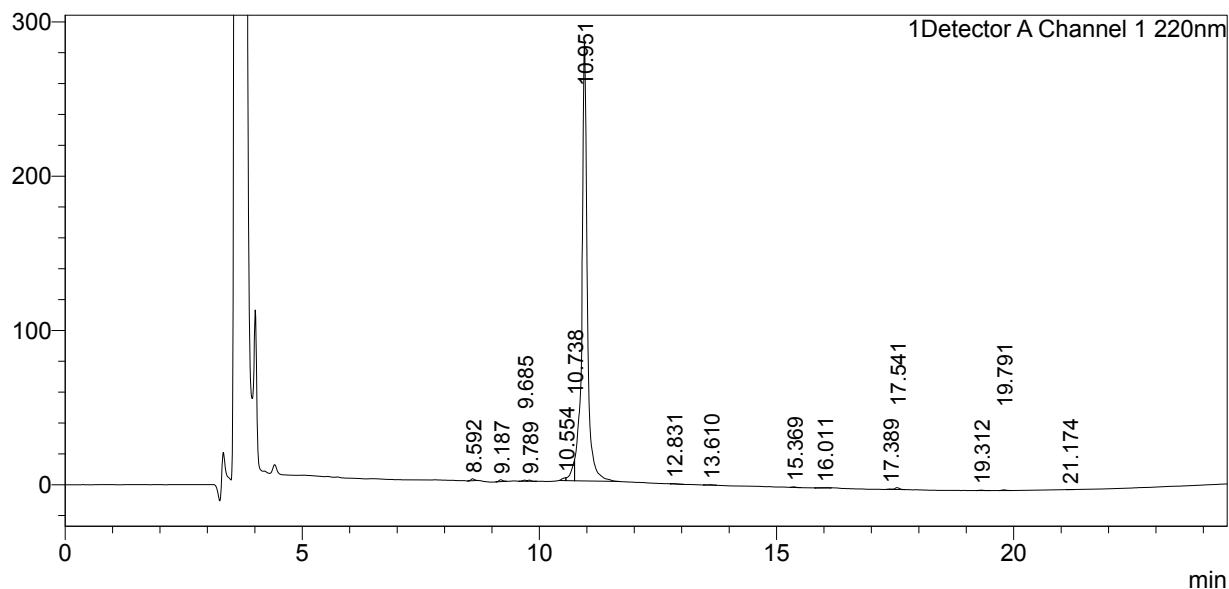
<<Column Performance>>

<Detector A>

Column : Boston Green C4 4.6 x 250 mm

<Chromatogram>

mV



<Peak Table>

Detector A Channel 1 220nm

| Peak# | Ret. Time | Area | Height | Area% |
|-------|-----------|---------|--------|---------|
| 1 | 8.592 | 6423 | 1259 | 0.271 |
| 2 | 9.187 | 6388 | 1177 | 0.270 |
| 3 | 9.685 | 4154 | 756 | 0.175 |
| 4 | 9.789 | 3698 | 759 | 0.156 |
| 5 | 10.554 | 9624 | 1770 | 0.406 |
| 6 | 10.738 | 66156 | 12809 | 2.792 |
| 7 | 10.951 | 2251437 | 285227 | 95.014 |
| 8 | 12.831 | 950 | 211 | 0.040 |
| 9 | 13.610 | 2164 | 340 | 0.091 |
| 10 | 15.369 | 1728 | 346 | 0.073 |
| 11 | 16.011 | 2531 | 269 | 0.107 |
| 12 | 17.389 | 1376 | 279 | 0.058 |
| 13 | 17.541 | 7969 | 1219 | 0.336 |
| 14 | 19.312 | 1812 | 293 | 0.076 |
| 15 | 19.791 | 2455 | 423 | 0.104 |
| 16 | 21.174 | 719 | 150 | 0.030 |
| Total | | 2369583 | 307288 | 100.000 |