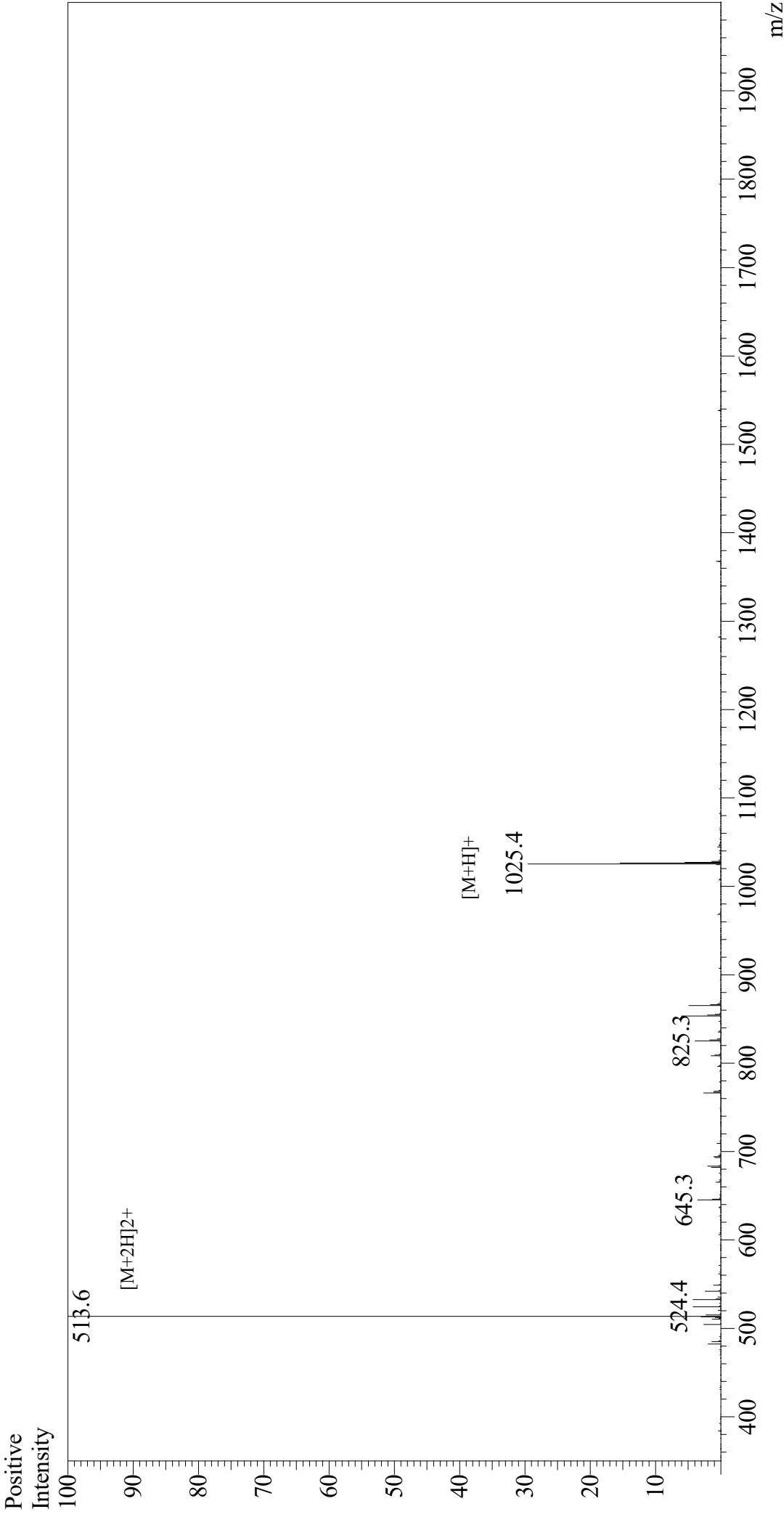


Mass Spectrum



Sample Information
Month-Day Processed : 07/02/21
Time Processed : 11:53:14
Injection Volume : 0.2
Sample Name : RGD
Cat. No. : RP20297
Lot. No. : E8851721F
Theoretical MW : 1025.06
Observed MW : 1025.2

Interface : ESI
Nebulizing Gas Flow : 1.5L/min
CDL Temp : 250
Block Temp : 200

Equipment : GK11010007
Interface Bias : +4.5 kV
Drying Gas Flow : 5 L/min
T.Flow : 0.2 ml/min
B.conc : 50% H2O/50% MeOH