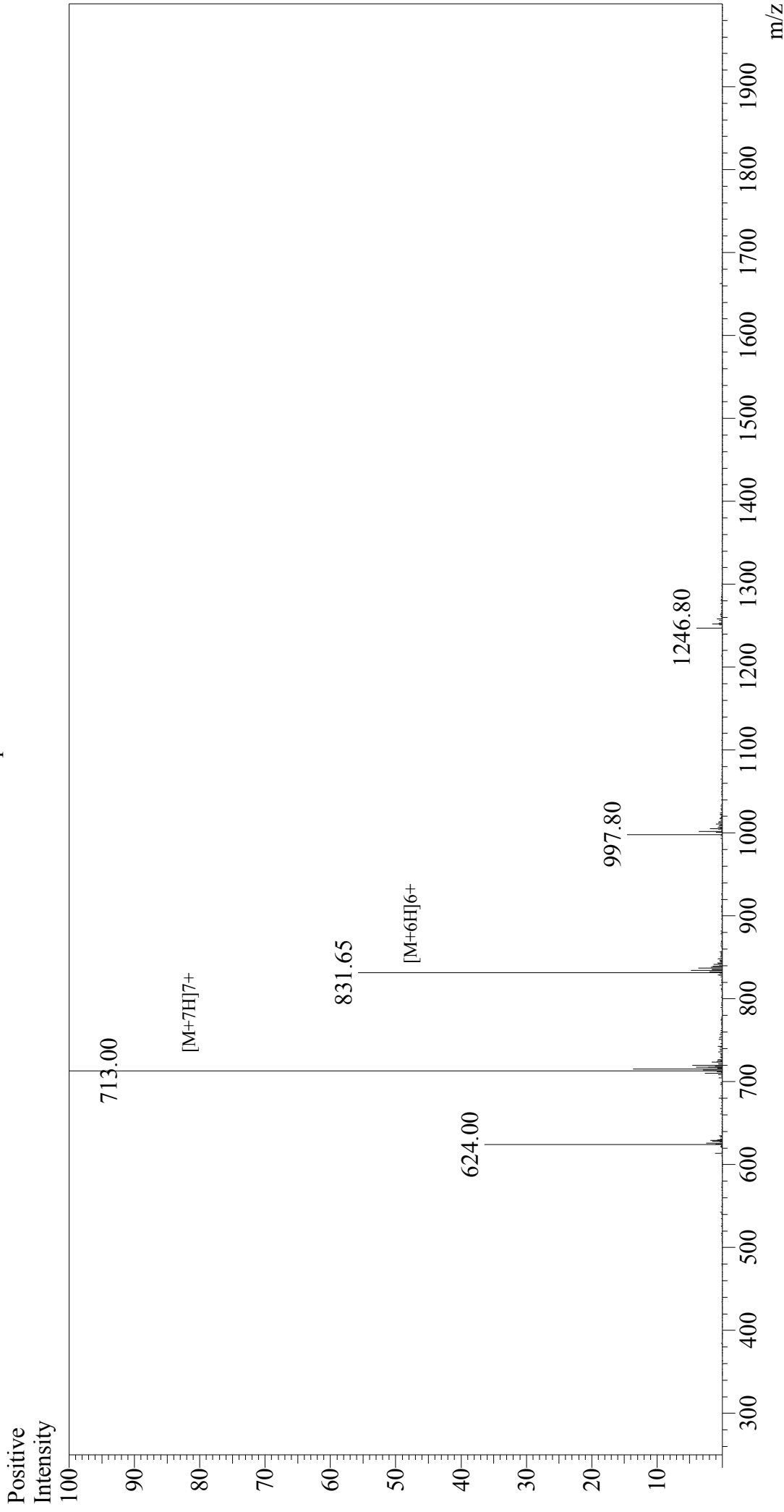


Mass Spectrum



Sample Information

Acquired by : Gary
 Month-Day Processed : 06/18/18
 Time Processed : 9:47:57
 Injection Volume : 0.2
 Sample Name : Gastric Inhibitory Peptide(GIP), human
 Cat. No. : RP10795
 Lot. No. : PE9931806
 Theoretical MW : 4983.60
 Observed MW : 4984.00

Interface : ESI
 Nebulizing Gas Flow : 1.5L/min
 CDL Temp : 250°C
 Block Temp : 200°C

Interface Bias : +4.5 kV
 Drying Gas Flow : 5 L/min
 T.Flow : 0.2 ml/min
 B.conc : 50% H2O/50% MeOH