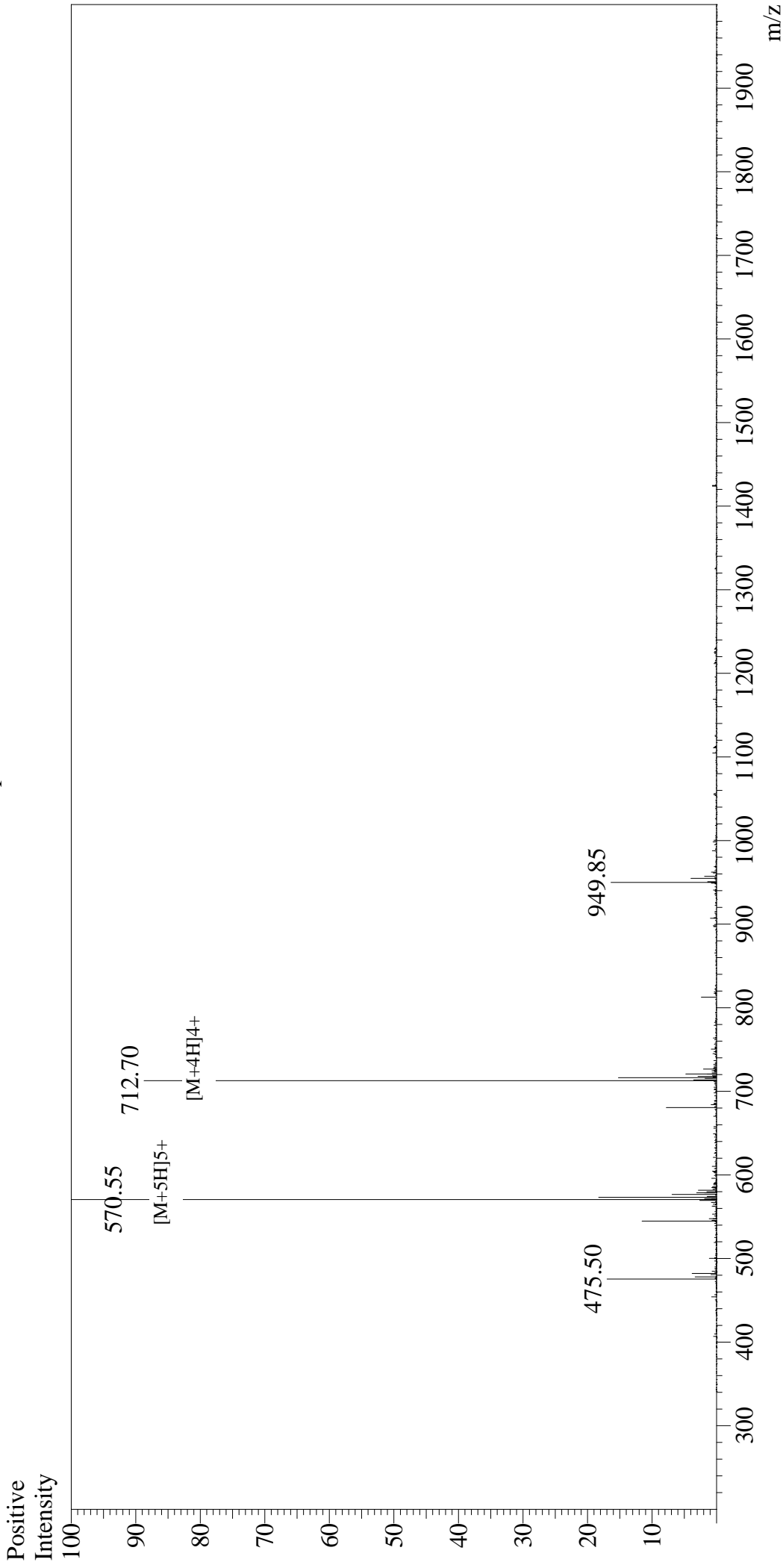


Mass Spectrum



Sample Information

User : Gary
Month-Day Processed : 06/26/18
Time Processed : 13:25:20
Injection Volume : 0.2
Sample Name : Melittin,honey bee
Cat No. : RP20415
Lot No. : PE2681806
Theoretical MW : 2847.50
Observed MW : 2847.75

Interface : ESI
Nebulizing Gas Flow : 1.5L/min
CDL Temp : 250 °C
Block Temp : 200 °C

Interface Bias : +4.5kV
Drying Gas Flow : 5 L/min
T.Flow : 0.2ml/min
B.conc : 50%H2O/50%MeOH