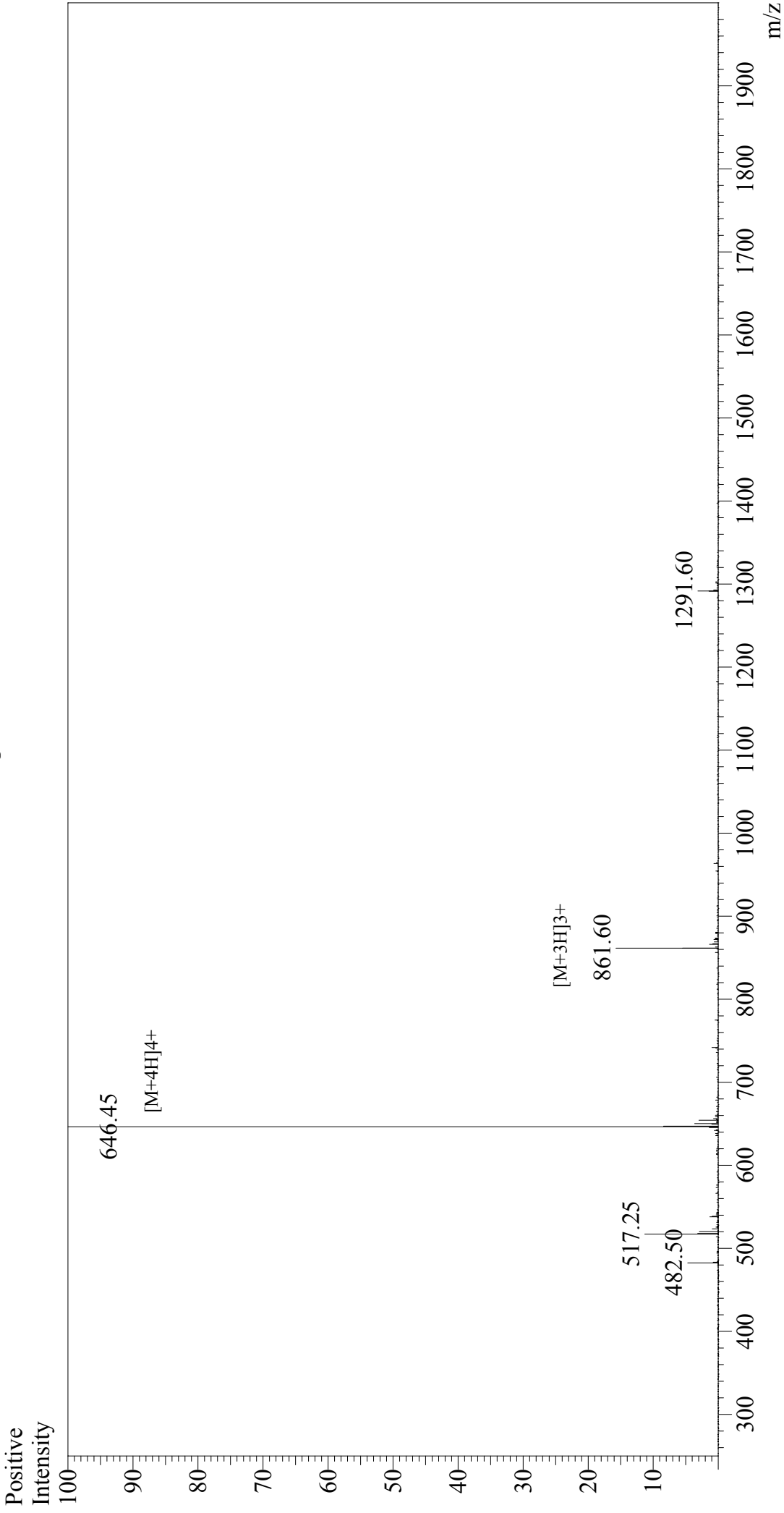


Mass Spectrum



Sample Information

Acquired by : Gary
Month-Day Processed : 10/20/17
Time Processed : 13:34:33
Injection Volume : 0.2
Sample Name : MOG(35-55)
Cat. No. : RP10245
Lot. No. : PE8051710
Theoretical MW : 2581.96
Observed MW : 2581.80

Interface : ESI
Nebulizing Gas Flow : 1.5L/min
CDL Temp : 250°C
Block Temp : 200°C

Interface Bias : +4.5 kV
Drying Gas Flow : 5 L/min
T.Flow : 0.2 ml/min
B.conc : 50%H2O/50%MeOH