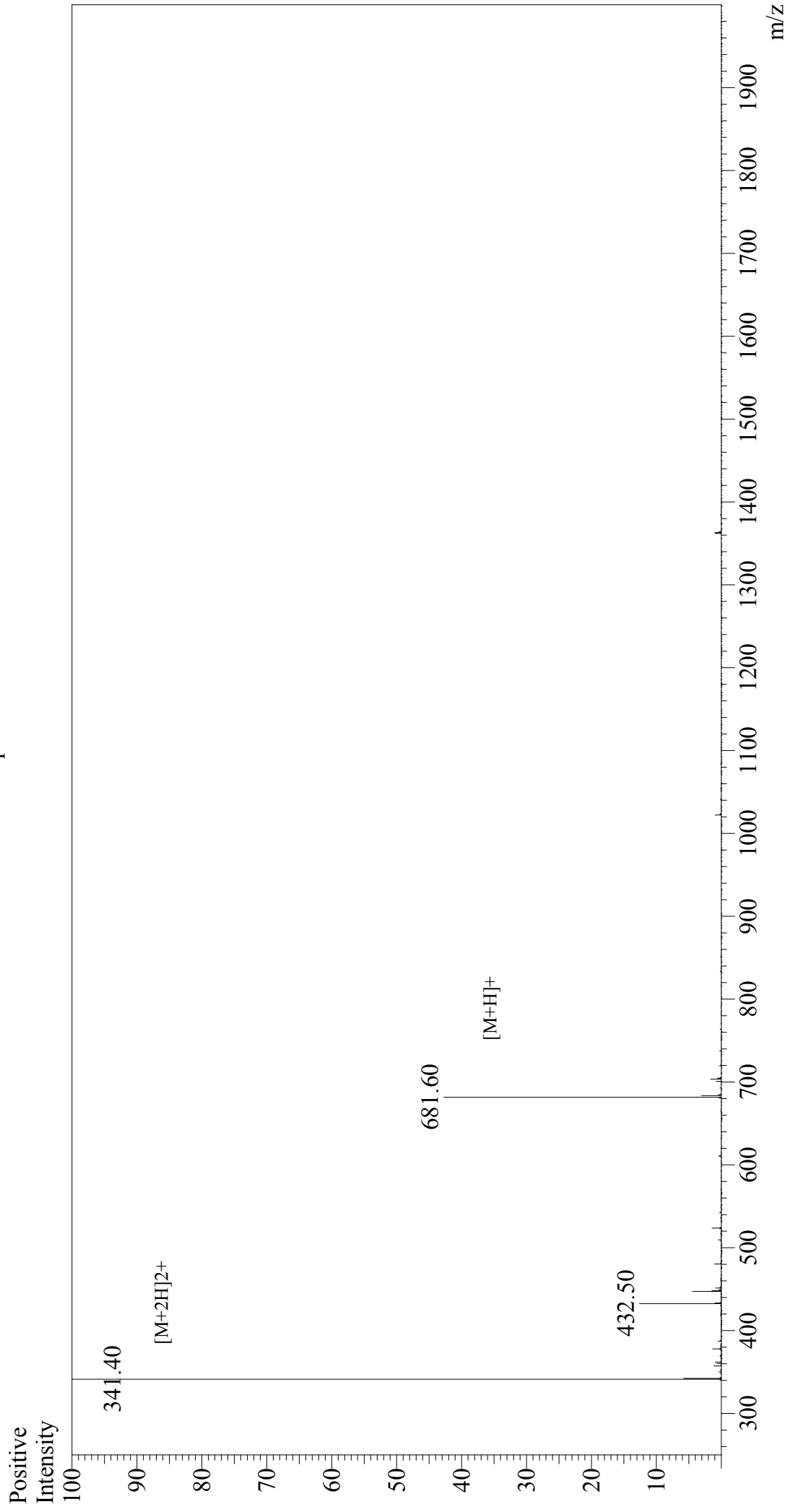


Mass Spectrum



Sample Information

Acquired by : Gary
Month-Day Processed : 01/22/18
Time Processed : 11:28:34
Injection Volume : 0.2
Sample Name : PAR-4 Agonist Peptide, amide
Cat No : RP11529
Lot No : PE14386546
Theoretical MW : 680.80
Observed MW : 680.80

Interface : ESI
Nebulizing Gas Flow : 1.5L/min
CDL Temp : 250°C
Block Temp : 200°C

Interface Bias : +4.5 kV
Drying Gas Flow : 5 L/min
T.Flow : 0.2 ml/min
B.conc : 50%H2O/50%MeOH