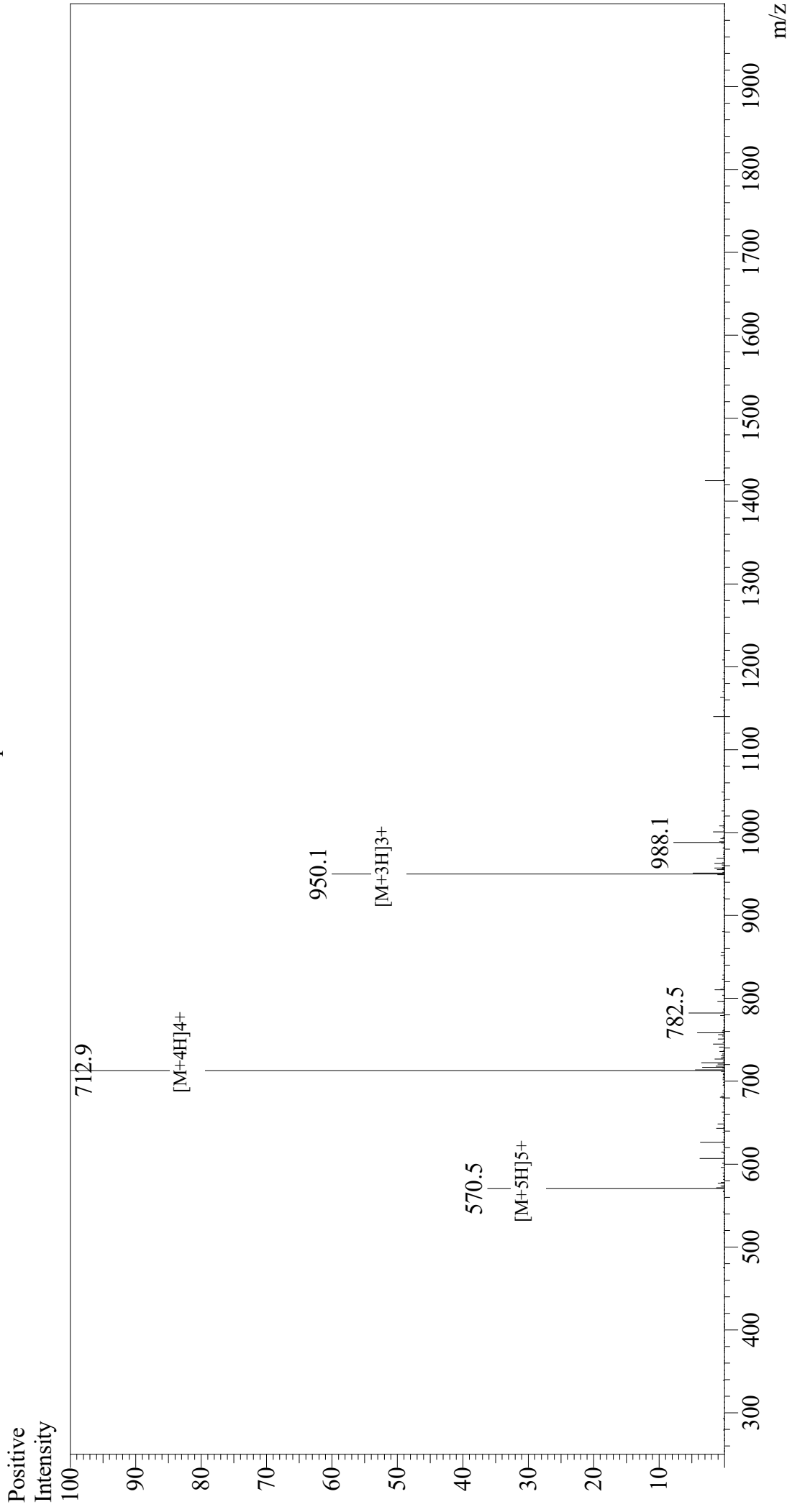


# Mass Spectrum



Sample Information  
Month-Day Processed : 03/12/21  
Time Processed : 9:49:53 PM  
Injection Volume : 0.4  
Sample Name : Melittin,honey bee  
Cat No. : RP20415  
Lot No. : E8228521C  
Theoretical MW : 2847.50  
Observed MW : 2847.6

Interface : ESI  
Nebulizing Gas Flow : 1.5L/min  
CDL Temp : 250  
Block Temp : 200

Equipment : GK11010007  
Interface Bias : +3.5 kV  
Drying Gas Flow : 5 L/min  
T.Flow : 0.2 ml/min  
B.conc : 50%H2O/50%MeOH