

Sample Name :Glucagon-Like Peptide (GLP) I (7-36), amide, human
 Cat No. :RP10773
 Lot No. :E0313220B
 Time Processed :10:19:29
 Month-Day-Year Processed :02/08/2020

Pump A : 0.065% trifluoroacetic in 100% water (v/v)
 Pump B : 0.05% trifluoroacetic in 100% acetonitrile (v/v)
 Total Flow:1 ml/min
 Wavelength:220 nm

<<LC Time Program>>

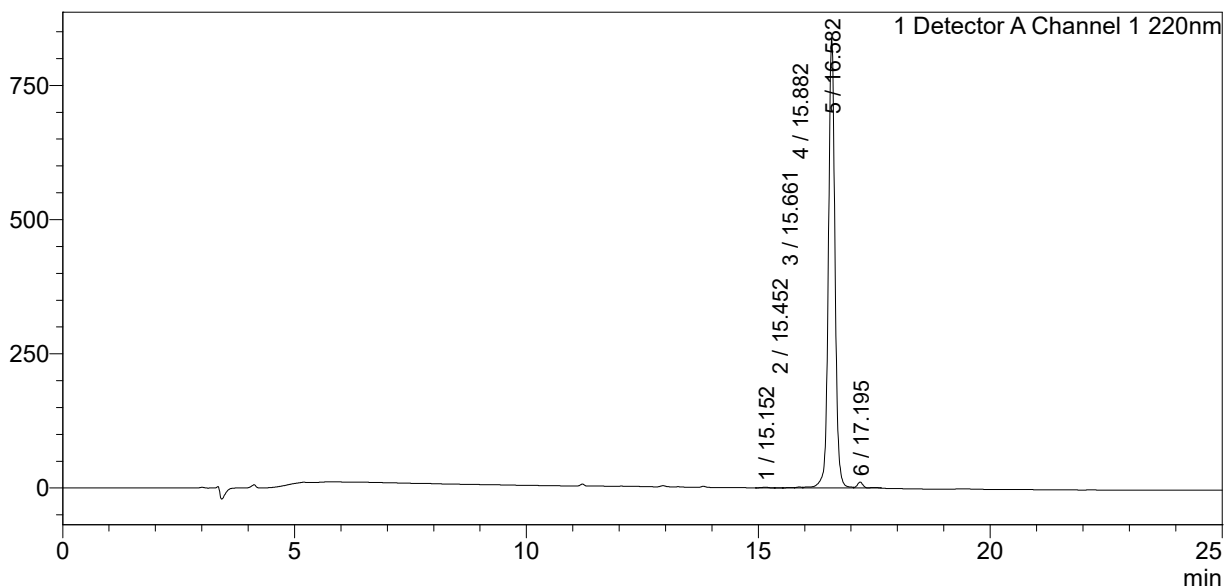
Time	Module	Command	Value
0.01	Pumps	Solvent B Conc.	5
25.00	Pumps	Solvent B Conc.	65
25.01	Pumps	Solvent B Conc.	95
27.00	Pumps	Solvent B Conc.	95
27.01	Pumps	Solvent B Conc.	5
35.00	Pumps	Solvent B Conc.	5
35.01	Controller	Stop	

<<Column Performance>>

<Detector A>
 Column : Alltima™ C18 4.6 x 250 mm
 Equipment:ZJ19010141

<Chromatogram>

mV



<Peak Table>

Detector A Channel 1 220nm

Peak#	Ret. Time	Area	Height	Area%
1	15.152	12571	1341	0.150
2	15.452	907	139	0.011
3	15.661	10247	955	0.122
4	15.882	14550	1889	0.173
5	16.582	8272126	838288	98.405
6	17.195	95790	10950	1.140
Total		8406191	853563	100.000