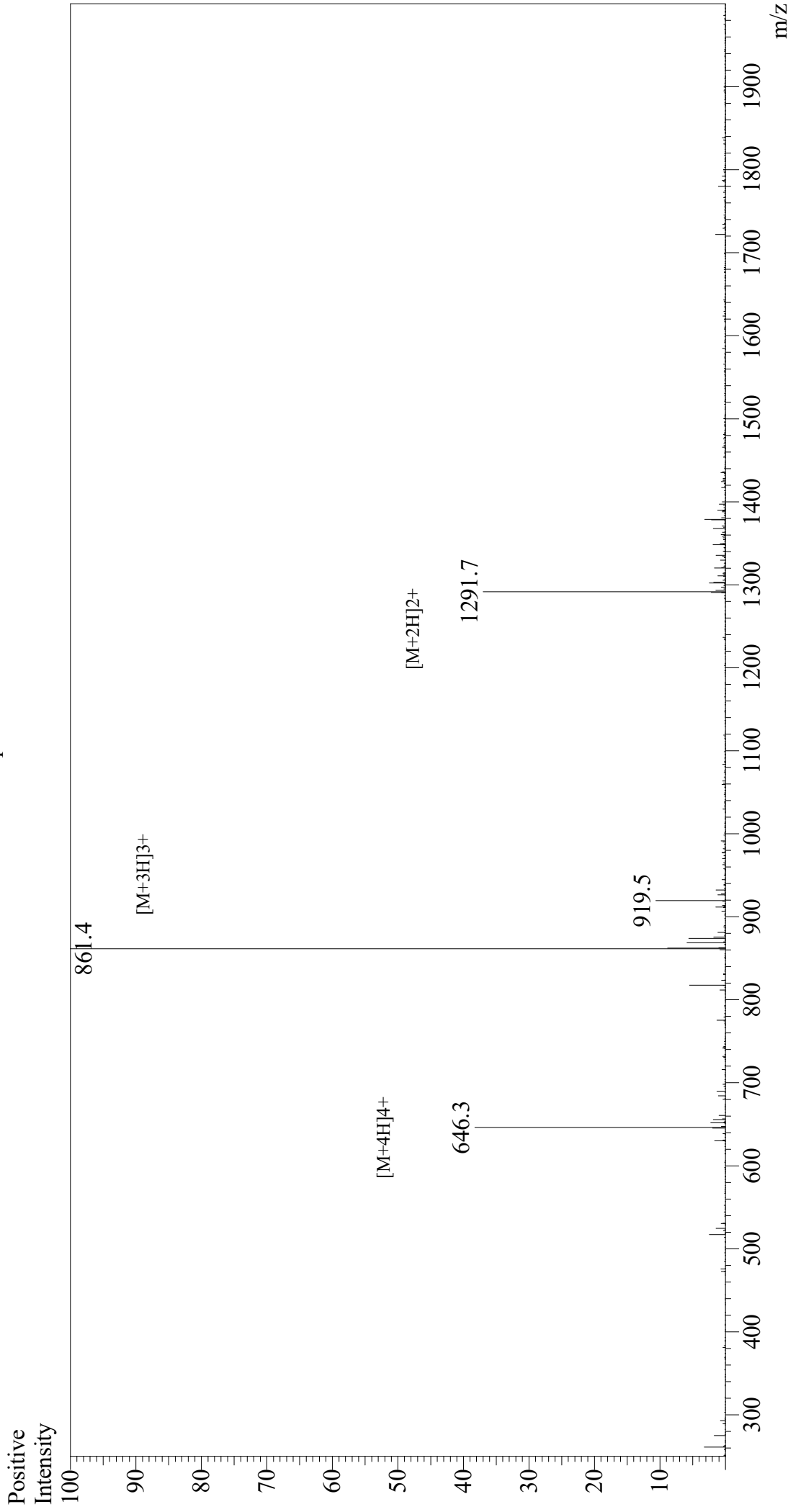


# Mass Spectrum



Sample Information  
Month-Day/Processed : 01/06/21  
Time Processed : 10:48:33 PM  
Injection Volume : 0.3  
Sample Name : MOG(35-55)  
Cat No. : RP10245  
Lot No. : E5154621A  
Theoretical MW : 2581.98  
Observed MW : 2581.2

Interface : ESI  
Nebulizing Gas Flow : 1.5L/min  
CDL Temp : 250  
Block Temp : 200

Equipment : GK11010007  
Interface Bias : +3.5 kV  
Drying Gas Flow : 5 L/min  
T.Flow : 0.2 ml/min  
B.conc : 50%H<sub>2</sub>O/50%MeOH