

Sample Name :mTRP-2(180-188)
 Cat No. :RP20250
 Lot No. :E4850919I
 Time Processed :14:38:39
 Month-Day-Year Processed :09/24/19

Pump A : 0.065% trifluoroacetic in 100% water (v/v)
 Pump B : 0.05% trifluoroacetic in 100% acetonitrile (v/v)
 Total Flow:1 ml/min
 Wavelength:220 nm

<<LC Time Program>>

| Time | Module | Command | Value |
|-------|------------|-----------------|-------|
| 0.01 | Pumps | Solvent B Conc. | 5 |
| 25.00 | Pumps | Solvent B Conc. | 65 |
| 25.01 | Pumps | Solvent B Conc. | 95 |
| 27.00 | Pumps | Solvent B Conc. | 95 |
| 27.01 | Pumps | Solvent B Conc. | 5 |
| 33.00 | Pumps | Solvent B Conc. | 5 |
| 33.01 | Controller | Stop | |

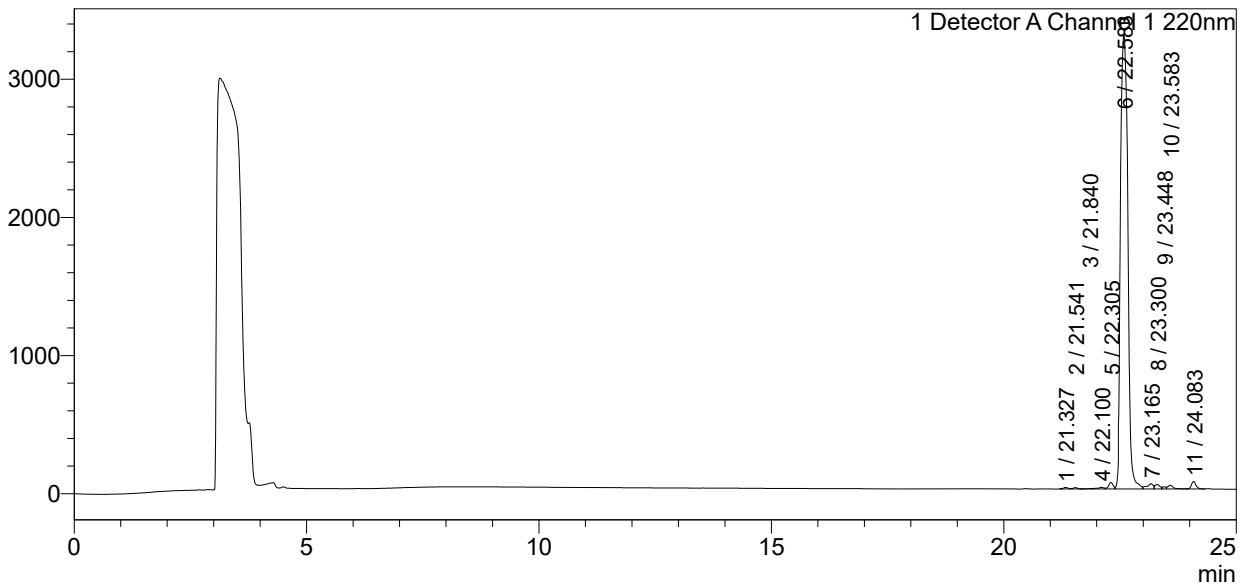
<<Column Performance>>

<Detector A>

Column : Inertsil ODS-3 4.6 x 250 mm
 Equipment: ZJ17010508

<Chromatogram>

mV



<Peak Table>

Detector A Channel 1 220nm

| Peak# | Ret. Time | Area | Height | Area% |
|-------|-----------|----------|---------|---------|
| 1 | 21.327 | 74768 | 10976 | 0.198 |
| 2 | 21.541 | 63912 | 9938 | 0.169 |
| 3 | 21.840 | 32056 | 3239 | 0.085 |
| 4 | 22.100 | 108504 | 11819 | 0.288 |
| 5 | 22.305 | 313602 | 47373 | 0.831 |
| 6 | 22.583 | 35880186 | 3290079 | 95.115 |
| 7 | 23.165 | 357734 | 37250 | 0.948 |
| 8 | 23.300 | 236111 | 32197 | 0.626 |
| 9 | 23.448 | 83961 | 15536 | 0.223 |
| 10 | 23.583 | 211446 | 26897 | 0.561 |
| 11 | 24.083 | 360833 | 53777 | 0.957 |
| Total | | 37723113 | 3539081 | 100.000 |