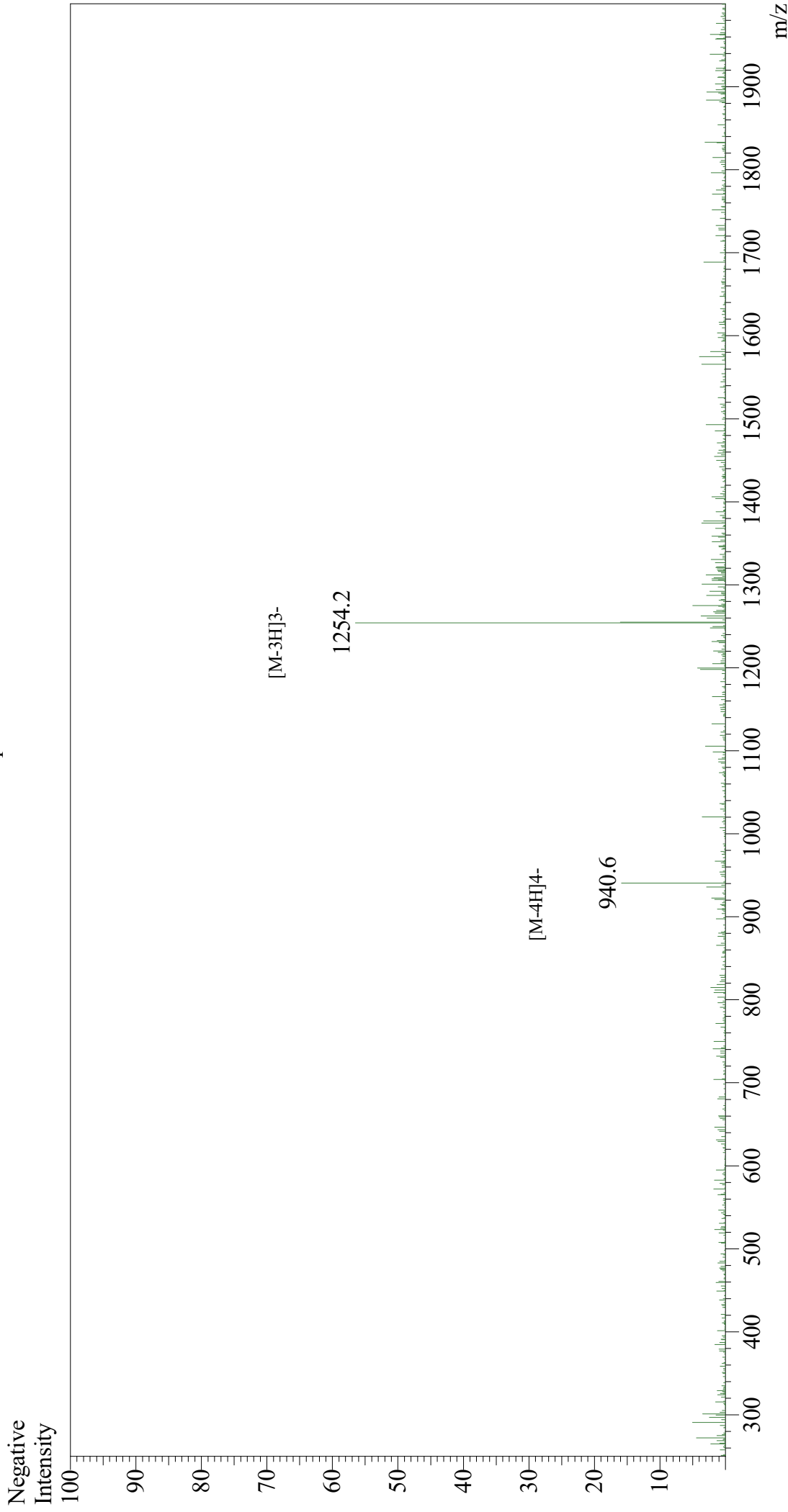


# Mass Spectrum



## Sample Information

User : Gary  
Month-Day Processed : 04/17/19  
Time Processed : 09:54:51 PM  
Injection Volume : 0.2  
Sample Name : Glucagon-Like Peptide (GLP) II, human  
Cat No. : RP10769  
Lot No. : PE371904  
Theoretical MW : 3766.20  
Observed MW : 3765.6

Interface : ESI  
Nebulizing Gas Flow : 1.5L/min  
CDL Temp : 250  
Block Temp : 200

Equipment : GK11010007  
Interface Bias : -3.5 kV  
Drying Gas Flow : 5 L/min  
T.Flow : 0.2 ml/min  
B.conc : 50%H2O/50%MeOH