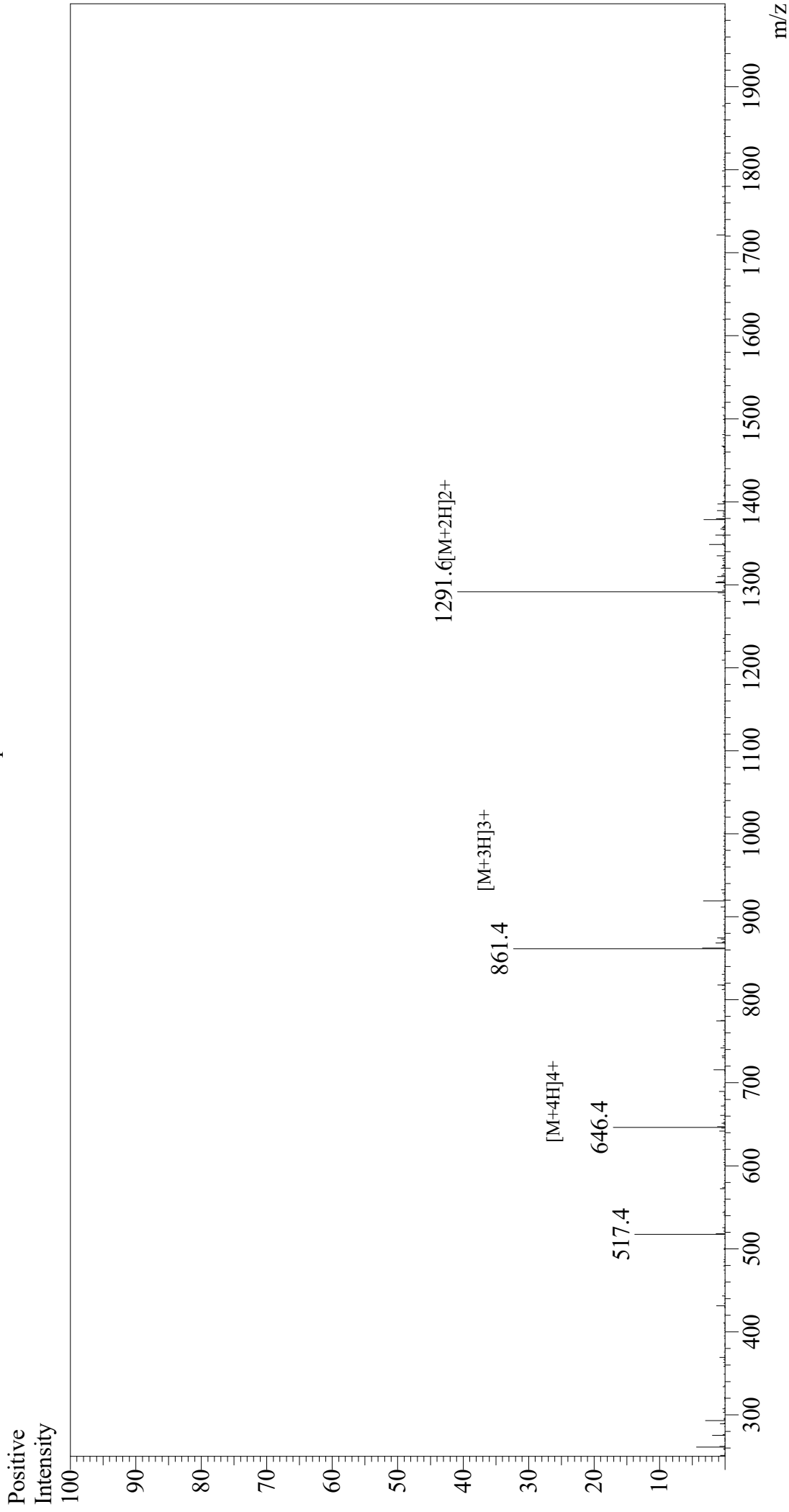


Mass Spectrum



Sample Information
Month-Day Processed : 01/27/21
Time Processed : 1:10:12 PM
Injection Volume : 0.3
Sample Name : MOG(35-55)
Cat No. : RP10245
Lot No. : E0655421A
Theoretical MW : 2581.98
Observed MW : 2581.2

Interface : ESI
Nebulizing Gas Flow : 1.5L/min
CDL Temp : 250
Block Temp : 200

Equipment : GK11010007
Interface Bias : +3.5 kV
Drying Gas Flow : 5 L/min
T.Flow : 0.2 ml/min
B.conc : 50%H2O/50%MeOH