

Sample Name : Amylin, human, amide  
 Cat. No. : RP11278  
 Lot. No. : PE8331711

Pump A : 0.065% trifluoroacetic in 100% water (v/v)  
 Pump B : 0.05% trifluoroacetic in 100% acetonitrile (v/v)  
 Total Flow:1 ml/min  
 Wavelength:220 nm

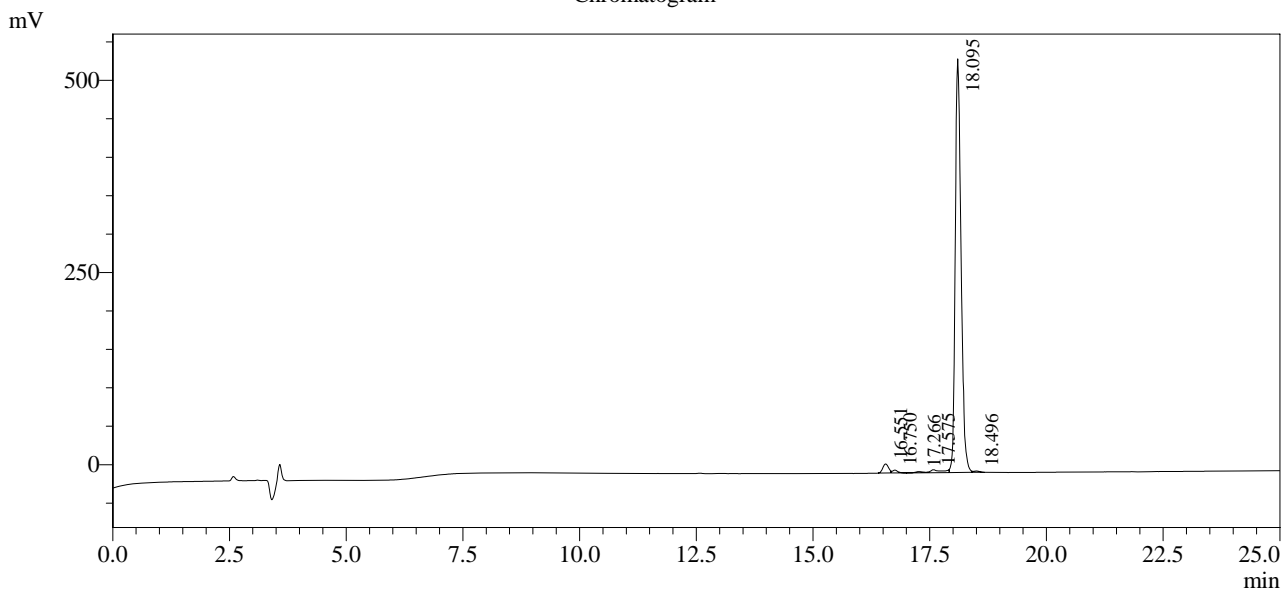
| Time  | Unit       | Command       | Value | Comment |
|-------|------------|---------------|-------|---------|
| 0.01  | Pumps      | Pump A B.Conc | 5     |         |
| 25.00 | Pumps      | Pump A B.Conc | 65    |         |
| 25.01 | Pumps      | Pump A B.Conc | 95    |         |
| 27.00 | Pumps      | Pump A B.Conc | 95    |         |
| 27.01 | Pumps      | Pump A B.Conc | 5     |         |
| 35.00 | Pumps      | Pump A B.Conc | 5     |         |
| 35.01 | Controller | Stop          |       |         |

<<Column Performance>>

<Detector A>

Column : Inertsil ODS-3 4.6 x 250 mm

Chromatogram



1 Det.A Ch1 / 220nm

Peak Table

Detector A Ch1 220nm

| Peak# | Ret. Time | Area    | Height | Area %  |
|-------|-----------|---------|--------|---------|
| 1     | 16.551    | 100610  | 11827  | 2.051   |
| 2     | 16.750    | 30531   | 3782   | 0.622   |
| 3     | 17.266    | 19204   | 1512   | 0.391   |
| 4     | 17.575    | 65550   | 3855   | 1.336   |
| 5     | 18.095    | 4674117 | 538172 | 95.279  |
| 6     | 18.496    | 15712   | 1734   | 0.320   |
| Total |           | 4905725 | 560882 | 100.000 |