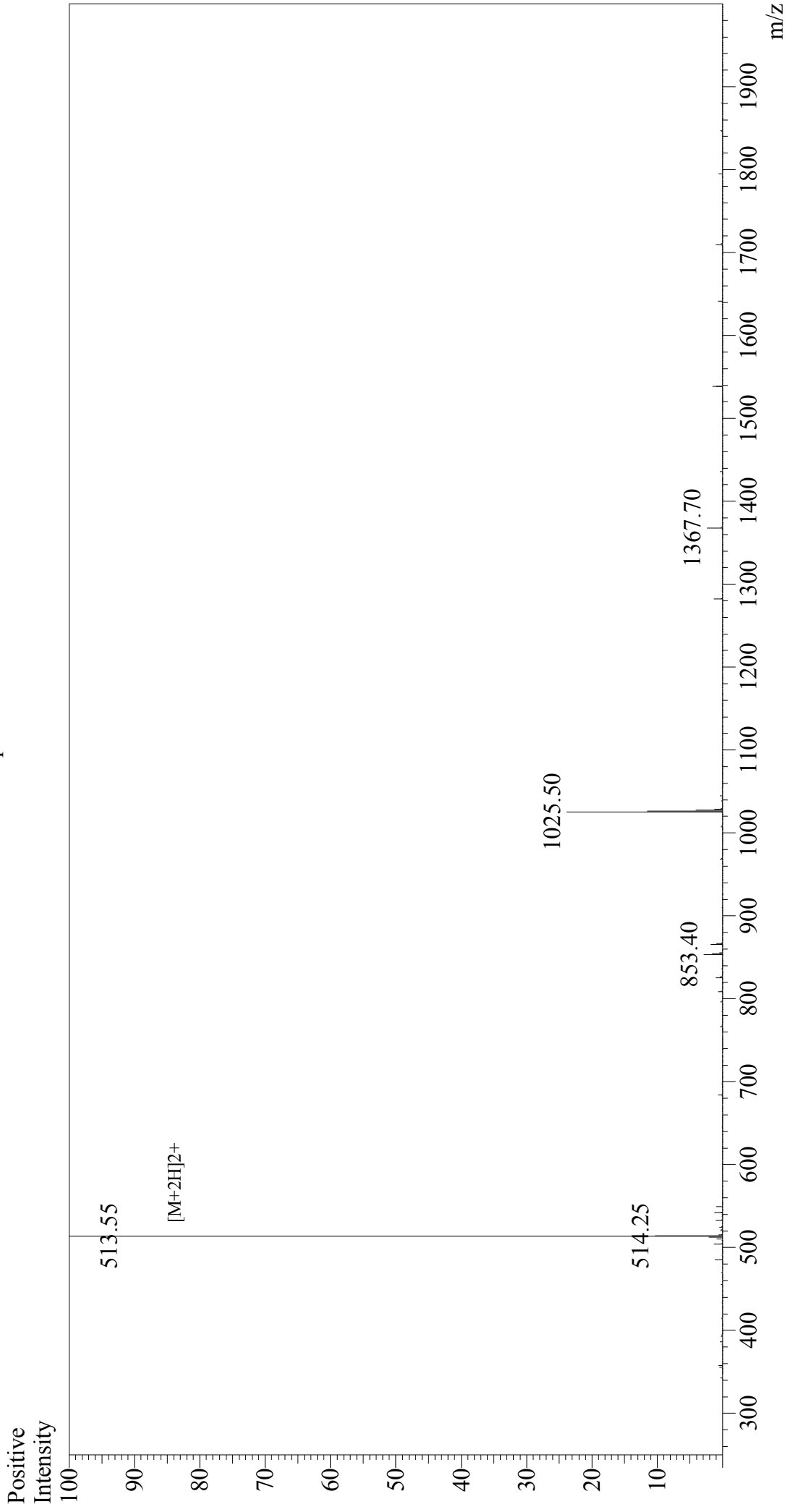


Mass Spectrum



Sample Information

Acquired by : Gary
Month-Day Processed : 05/29/18
Time Processed : 12:22:33
Injection Volume : 0.2
Sample Name : RGD
Cat. No. : RP20297
Lot. No. : PE2371805
oretical MW : 1025.06
Observed MW : 1025.10

Interface : ESI
Nebulizing Gas Flow : 1.5L/min
CDL Temp : 250°C
Block Temp : 200°C

Interface Bias : +4.5 kV
Drying Gas Flow : 5 L/min
T.Flow : 0.2 ml/min
B.conc : 50%H2O/50%MeOH