

Sample Name : Glucagon-Like Peptide (GLP) I (7-36), amide, human

Cat No. : RP10773

Lot No. : E9392921D

Time Processed : 23:39:15

Month-Day-Year Processed : 04/21/2021

Pump A : 0.065% trifluoroacetic in 100% water (v/v)

Pump B : 0.05% trifluoroacetic in 100% acetonitrile (v/v)

Total Flow: 1 ml/min

Wavelength: 220 nm

<<LC Time Program>>

Time	Module	Command	Value
0.01	Pumps	B.Conc	5
25.00	Pumps	B.Conc	65
25.01	Pumps	B.Conc	95
27.00	Pumps	B.Conc	95
27.01	Pumps	B.Conc	5
35.00	Pumps	B.Conc	5
35.01	Controller	Stop	

<<Column Performance>>

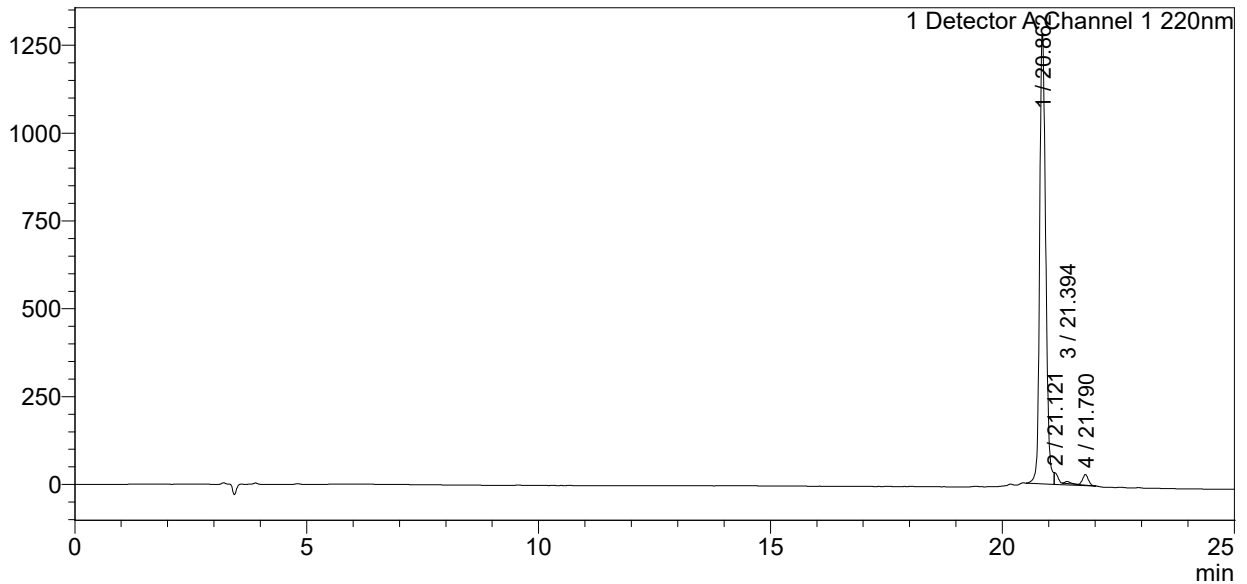
<Detector A>

Column : Inertsil ODS-3 4.6 x 250 mm

Equipment : SS-CM-0310

<Chromatogram>

mV



<Peak Table>

Detector A Channel 1 220nm

Peak#	Ret. Time	Area	Height	Area%
1	20.862	11633405	1281383	95.241
2	21.121	272045	33205	2.227
3	21.394	51970	6147	0.425
4	21.790	257270	30428	2.106
Total		12214690	1351163	100.000