

Sample Name: Glucagon-Like Peptide (GLP) I (7-36), amide, human
 Cat. No. : RP10773
 Lot. No. : E3014721D
 Time Processed : 6:31:58
 Month-Day-Year Processed : 04/14/2021

Pump A : 0.065% trifluoroacetic in 100% water (v/v)
 Pump B : 0.05% trifluoroacetic in 100% acetonitrile (v/v)
 Total Flow: 1 ml/min
 Wavelength: 220 nm

<<LC Time Program>>

Time	Module	Command	Value
0.01	Pumps	Pump B Conc.	5
25.00	Pumps	Pump B Conc.	65
25.01	Pumps	Pump B Conc.	95
27.00	Pumps	Pump B Conc.	95
27.01	Pumps	Pump B Conc.	5
32.00	Pumps	Pump B Conc.	5
32.01	Controller	Stop	

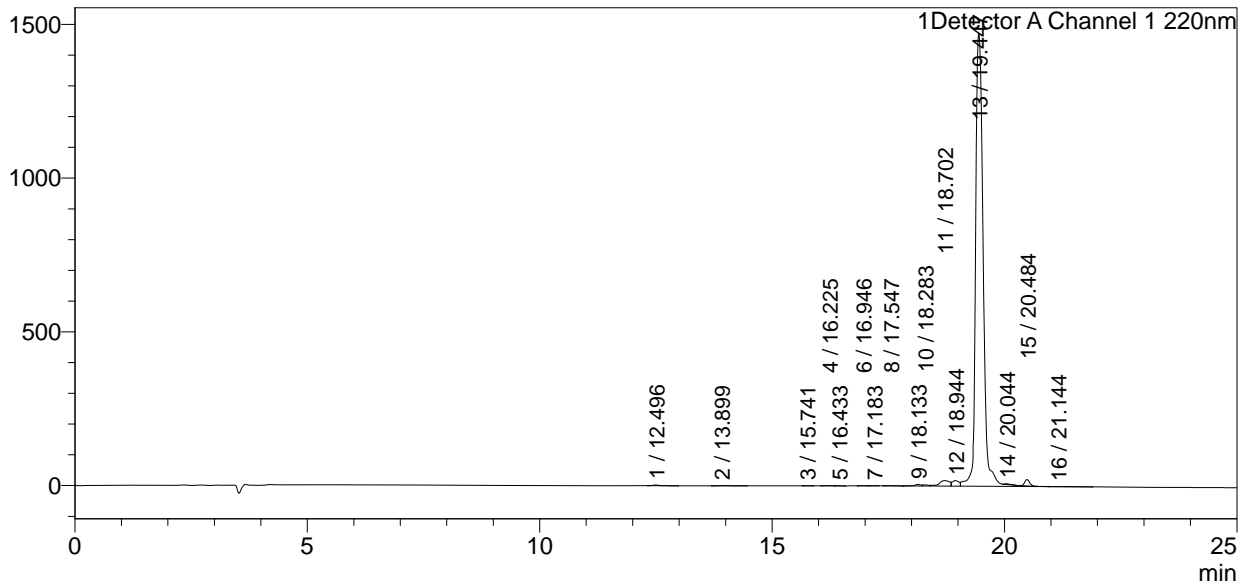
<<Column Performance>>

<Detector A>

Column : Inertsil ODS-3 4.6 x 250 mm
 Equipment: GK12010012

<Chromatogram>

mV



<Peak Table>

Detector A Channel 1 220nm

Peak#	Ret. Time	Area	Height	Area%
1	12.496	19305	2454	0.111
2	13.899	10560	530	0.061
3	15.741	2174	333	0.013
4	16.225	5673	561	0.033
5	16.433	1776	240	0.010
6	16.946	5161	731	0.030
7	17.183	2073	250	0.012
8	17.547	5820	570	0.034
9	18.133	49273	4914	0.284
10	18.283	29366	3544	0.169
11	18.702	274975	17459	1.585
12	18.944	183158	18242	1.056
13	19.447	16572442	1472491	95.509
14	20.044	22378	2371	0.129
15	20.484	152639	20700	0.880

Peak#	Ret. Time	Area	Height	Area%
16	21.144	14899	699	0.086
Total		17351673	1546088	100.000