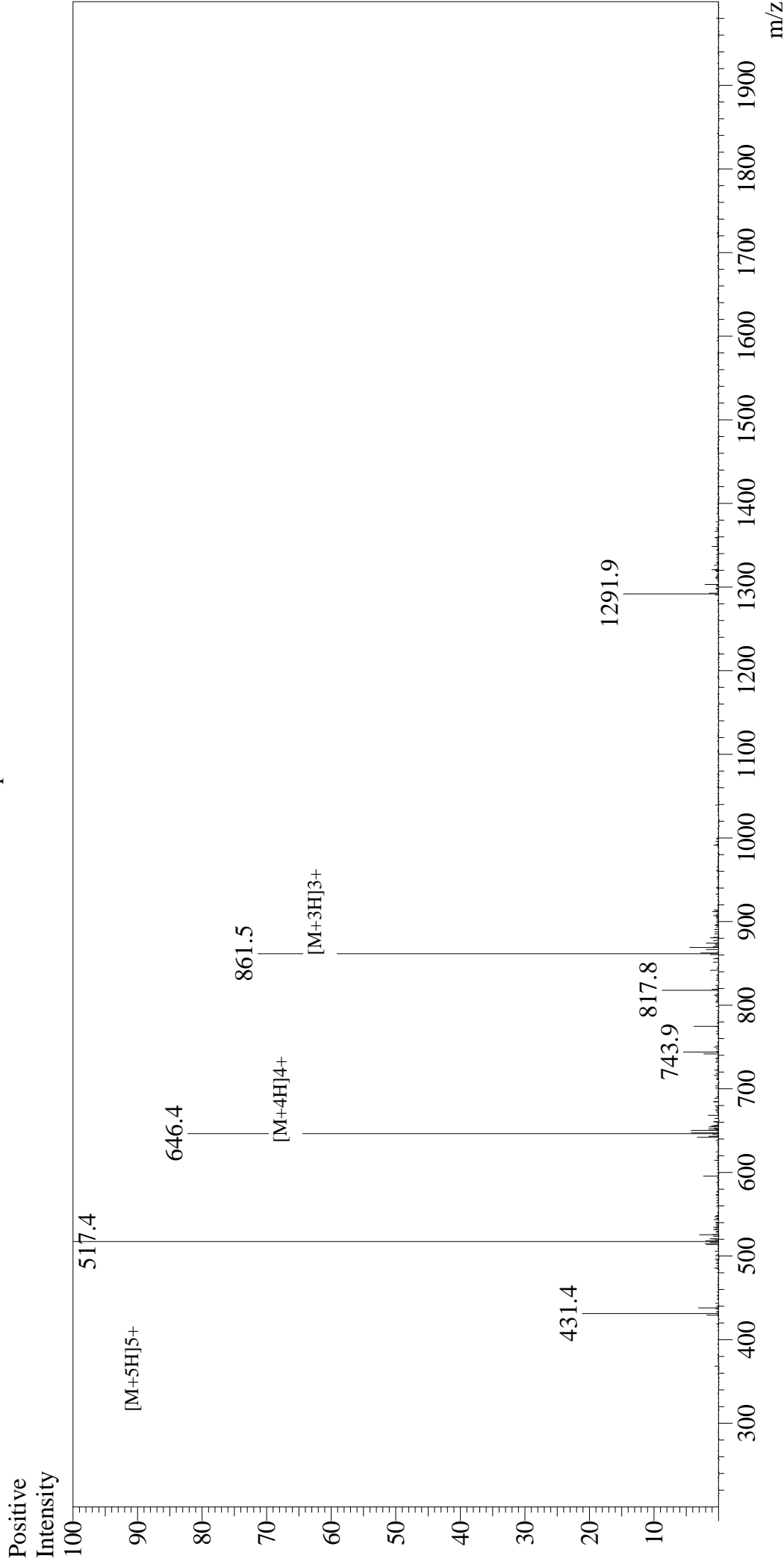


Mass Spectrum



Sample Information

User : Gary
Month-Day Processed : 10/02/19
Time Processed : 16:13:25
Injection Volume : 0.3
Sample Name : MOG(35-55)
Cat No. : RPI0245
Lot No. : E6986619J
Theoretical MW : 2581.98
Observed MW : 2582.0

Interface : ESI
Nebulizing Gas Flow : 1.5L/min
CDL Temp : 250
Block Temp : 200

Equipment : GK11010007
Interface Bias : +4.5kV
Drying Gas Flow : 5 L/min
T.Flow : 0.2ml/min
B.conc : 50%H2O/50%MeOH