

Sample Name :Glucagon-Like Peptide (GLP) I (7-36), amide, human  
 Cat No. :RP10773  
 Lot No. :E7158020L  
 Time Processed :21:49:25  
 Month-Day-Year Processed :12/26/2020

Pump A : 0.065% trifluoroacetic in 100% water (v/v)  
 Pump B : 0.05% trifluoroacetic in 100% acetonitrile (v/v)  
 Total Flow:1 ml/min  
 Wavelength:220 nm  
 <<LC Time Program>>

Time	Module	Command	Value
0.01	Pumps	B.Conc	5
25.00	Pumps	B.Conc	65
25.01	Pumps	B.Conc	95
27.00	Pumps	B.Conc	95
27.01	Pumps	B.Conc	5
35.00	Pumps	B.Conc	5
35.01	Controller	Stop	

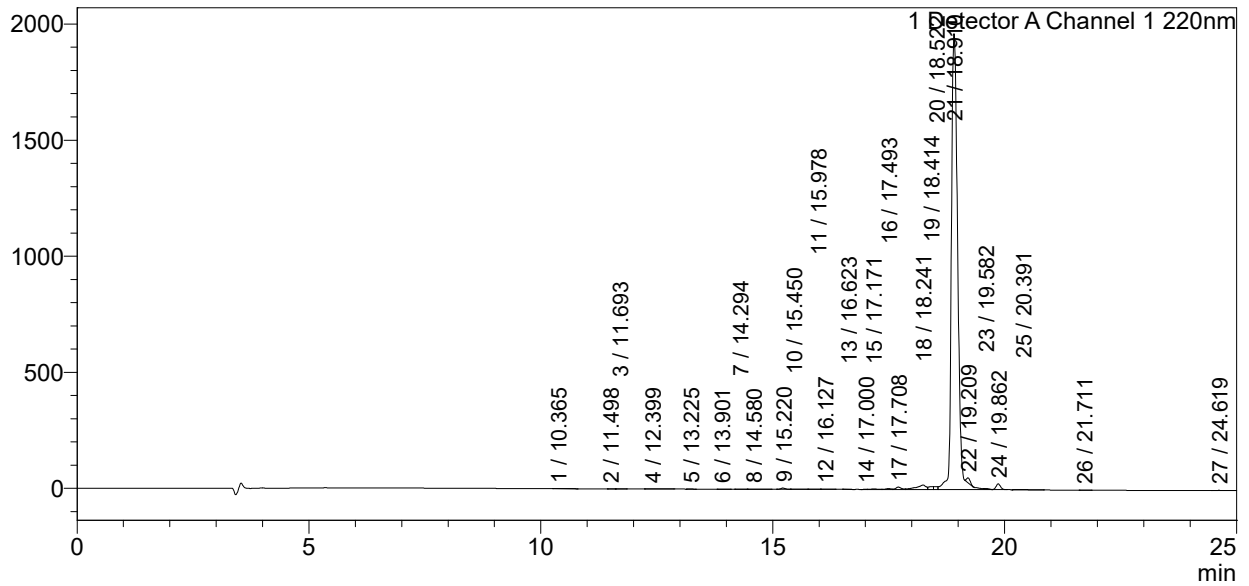
<<Column Performance>>

<Detector A>

Column :Inertsil ODS-3 4.6 x 250 mm  
 Equipment: ZJ19010141

### <Chromatogram>

mV



### <Peak Table>

Detector A Channel 1 220nm

Peak#	Ret. Time	Area	Height	Area%
1	10.365	1995	136	0.010
2	11.498	1060	170	0.005
3	11.693	1373	261	0.007
4	12.399	12758	832	0.066
5	13.225	2790	495	0.014
6	13.901	1120	139	0.006
7	14.294	2934	294	0.015
8	14.580	7375	583	0.038
9	15.220	36013	5428	0.186
10	15.450	3191	262	0.016
11	15.978	2989	379	0.015
12	16.127	8006	1056	0.041
13	16.623	1750	244	0.009
14	17.000	1439	253	0.007

Peak#	Ret. Time	Area	Height	Area%
15	17.171	23284	2444	0.120
16	17.493	29518	3677	0.153
17	17.708	83533	10415	0.432
18	18.241	272170	19170	1.407
19	18.414	86182	12144	0.445
20	18.522	71739	12157	0.371
21	18.910	18382257	1963974	95.020
22	19.209	113148	20682	0.585
23	19.582	6430	929	0.033
24	19.862	161709	24401	0.836
25	20.391	17611	765	0.091
26	21.711	1567	216	0.008
27	24.619	11818	1213	0.061
Total		19345758	2082719	100.000