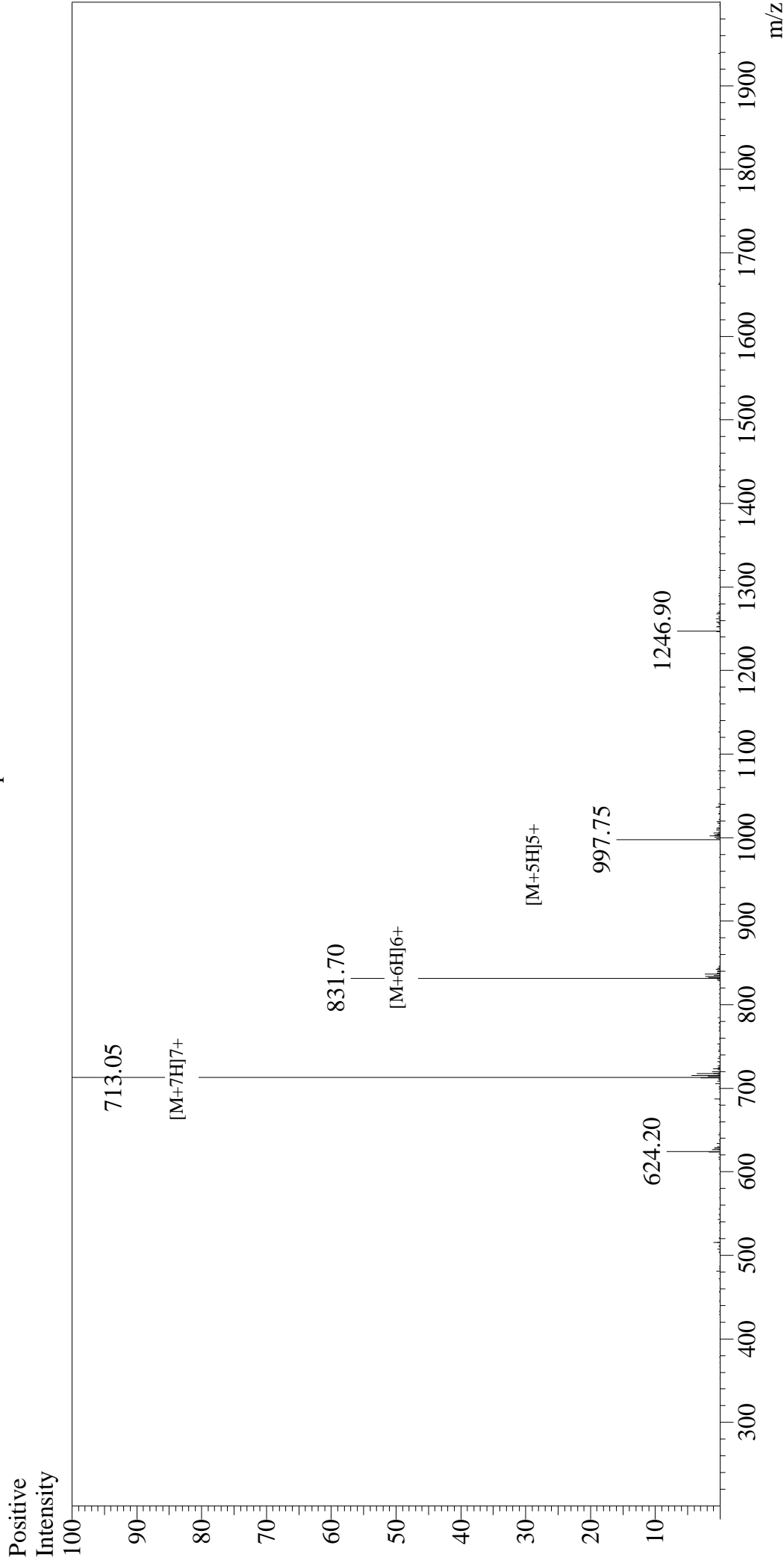


# Mass Spectrum



## Sample Information

User : Gary  
Month-Day Processed : 06/02/18  
Time Processed : 16:31:05  
Injection Volume : 0.2  
Sample Name : Gastric Inhibitory Peptide (GIP), human  
Cat No. : RPI0795  
Lot No. : PE2611806  
Theoretical MW : 4983.60  
Observed MW : 4984.35

Interface : ESI  
Nebulizing Gas Flow : 1.5L/min  
CDL Temp : 250°C  
Block Temp : 200°C

Interface Bias : +4.5kV  
Drying Gas Flow : 5 L/min  
T.Flow : 0.2ml/min  
B.conc : 50%H<sub>2</sub>O/50%MeOH