

Sample Name : β -Amyloid (1-42), human
 Cat. No. : RP10017
 Lot. No. : PE6361801

Pump A : 0.065% trifluoroacetic in 100% water (v/v)
 Pump B : 0.05% trifluoroacetic in 100% acetonitrile (v/v)
 Total Flow: 1 ml/min
 Wavelength: 220 nm

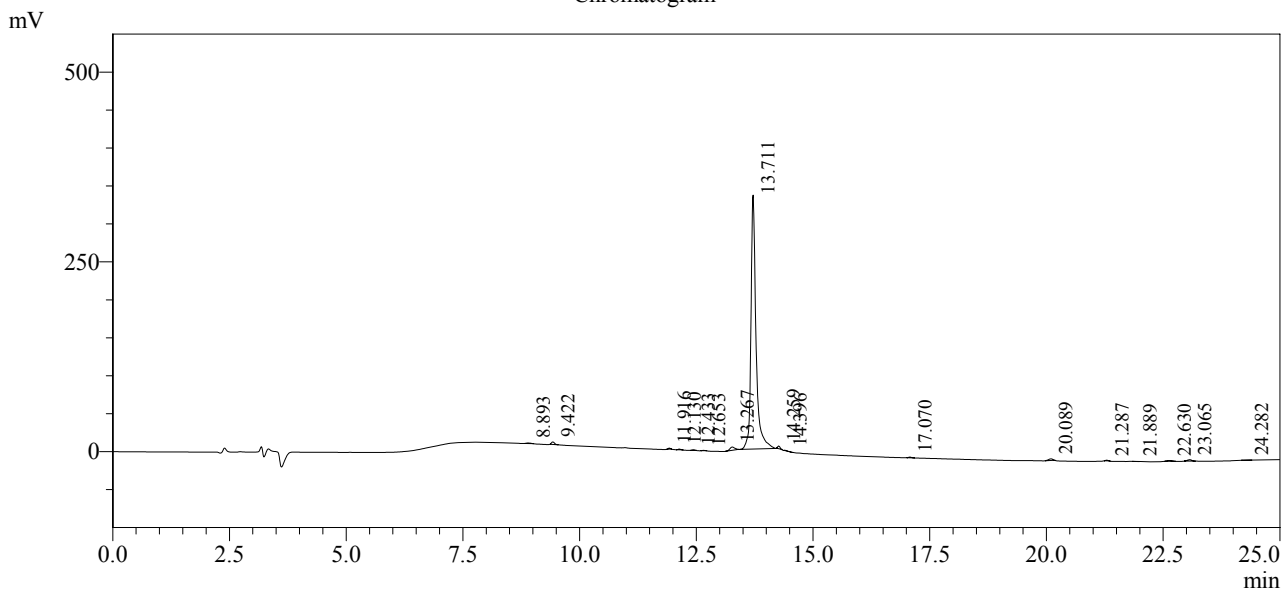
| Time | Unit | Command | Value | Comment |
|-------|------------|---------------|-------|---------|
| 0.01 | Pumps | Pump A B.Conc | 10 | |
| 25.00 | Pumps | Pump A B.Conc | 100 | |
| 25.01 | Pumps | Pump A B.Conc | 95 | |
| 31.00 | Pumps | Pump A B.Conc | 95 | |
| 31.01 | Pumps | Pump A B.Conc | 10 | |
| 40.00 | Pumps | Pump A B.Conc | 10 | |
| 40.01 | Controller | Stop | | |

<<Column Performance>>

<Detector A>

Column : Inertsil ODS-3 4.6 x 250 mm

Chromatogram



1 Det. A Ch1 / 220nm

Peak Table

Detector A Ch1 220nm

| Peak# | Ret. Time | Area | Height | Area % |
|-------|-----------|---------|--------|---------|
| 1 | 8.893 | 4105 | 647 | 0.155 |
| 2 | 9.422 | 14366 | 3300 | 0.541 |
| 3 | 11.916 | 4469 | 1350 | 0.168 |
| 4 | 12.130 | 3969 | 999 | 0.150 |
| 5 | 12.433 | 2903 | 763 | 0.109 |
| 6 | 12.653 | 1916 | 446 | 0.072 |
| 7 | 13.267 | 31769 | 4359 | 1.197 |
| 8 | 13.711 | 2531215 | 334579 | 95.361 |
| 9 | 14.259 | 12453 | 3476 | 0.469 |
| 10 | 14.396 | 1753 | 383 | 0.066 |
| 11 | 17.070 | 3966 | 920 | 0.149 |
| 12 | 20.089 | 13939 | 2185 | 0.525 |
| 13 | 21.287 | 3734 | 910 | 0.141 |
| 14 | 21.889 | 1107 | 249 | 0.042 |
| 15 | 22.630 | 7357 | 1012 | 0.277 |
| 16 | 23.065 | 12375 | 1915 | 0.466 |
| 17 | 24.282 | 2953 | 431 | 0.111 |
| Total | | 2654349 | 357922 | 100.000 |