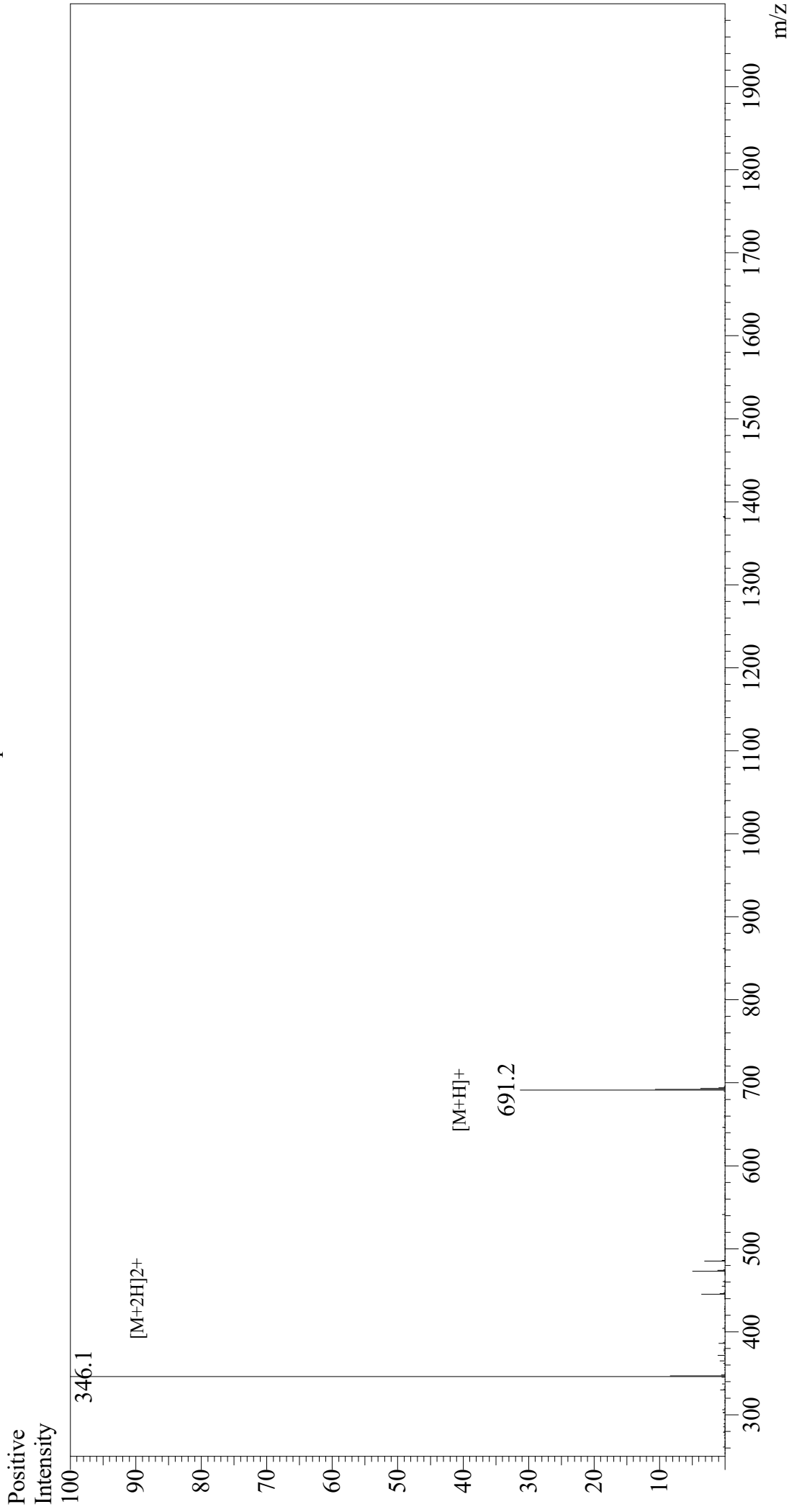


Mass Spectrum



Sample Information

Month-Day Processed : 04/11/21
Time Processed : 10:30:12 AM
Injection Volume : 0.4
Sample Name : GRGDSPC
Cat No. : RP20283
Lot No. : E2670221D
Theoretical MW : 689.73
Observed MW : 690.2

Interface : ESI
Nebulizing Gas Flow : 1.5L/min
CDL Temp : 250
Block Temp : 200

Equipment : GK11010007
Interface Bias : +3.5 kV
Drying Gas Flow : 5 L/min
T.Flow : 0.2 ml/min
B.conc : 50% H_2O /50% $MeOH$