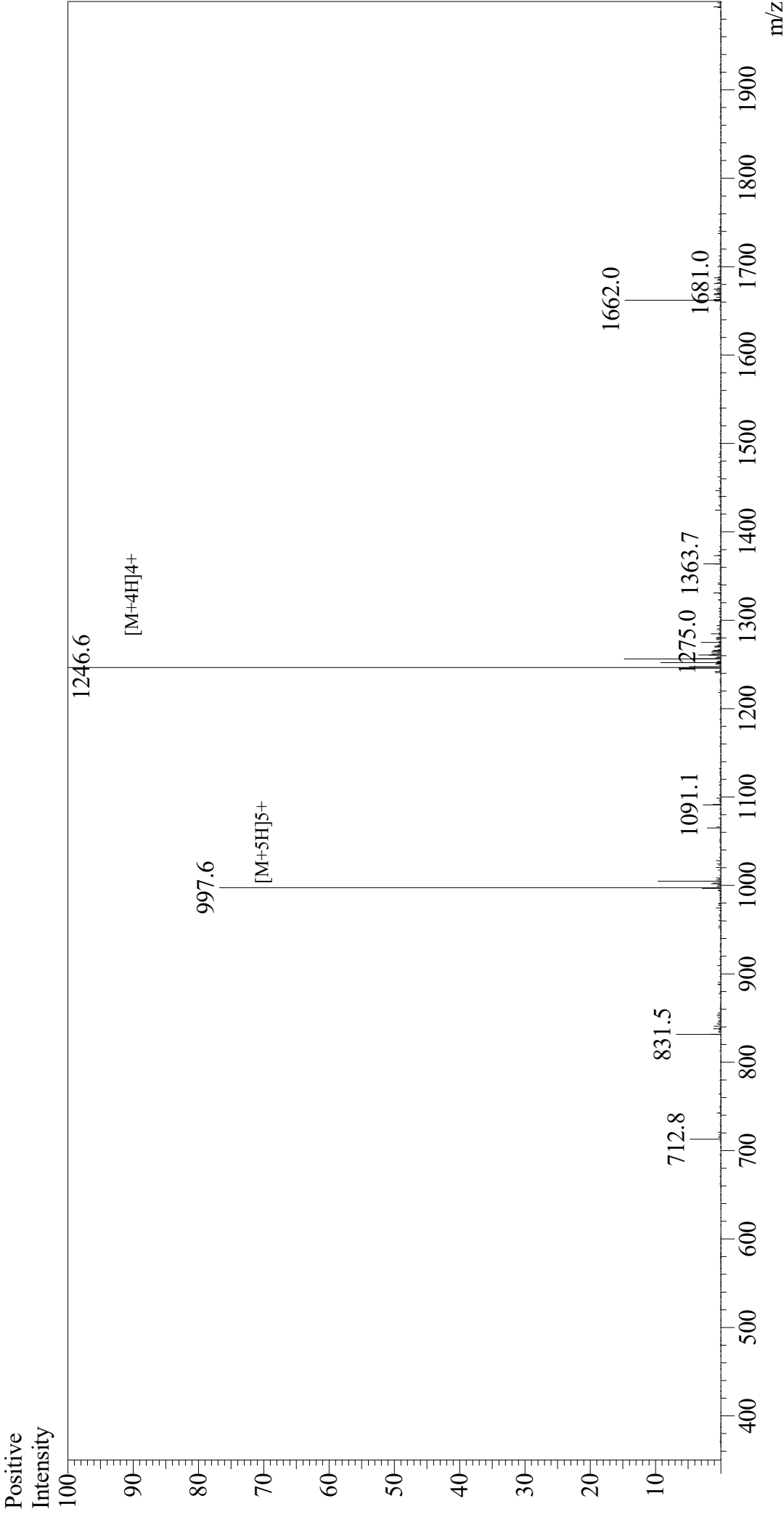


Mass Spectrum



Sample Information
Month-Day Processed : 07/28/21
Time Processed : 8:33:08
Injection Volume : 0.4
Sample Name : Gastric Inhibitory Peptide (GIP), human
Cat No : RP10795
Lot No : E4079821G
Theoretical MW : 4983.60
Observed MW : 4982.4

Interface : ESI
Nebulizing Gas Flow : 1.5 L/min
CDL Temp : 250
Block Temp : 200

Equipment : GK11010007
Interface Bias : +4.5 kV
Drying Gas Flow : 5 L/min
T.Flow : 0.2 ml/min
B.conc : 50% H2O/50% MeOH