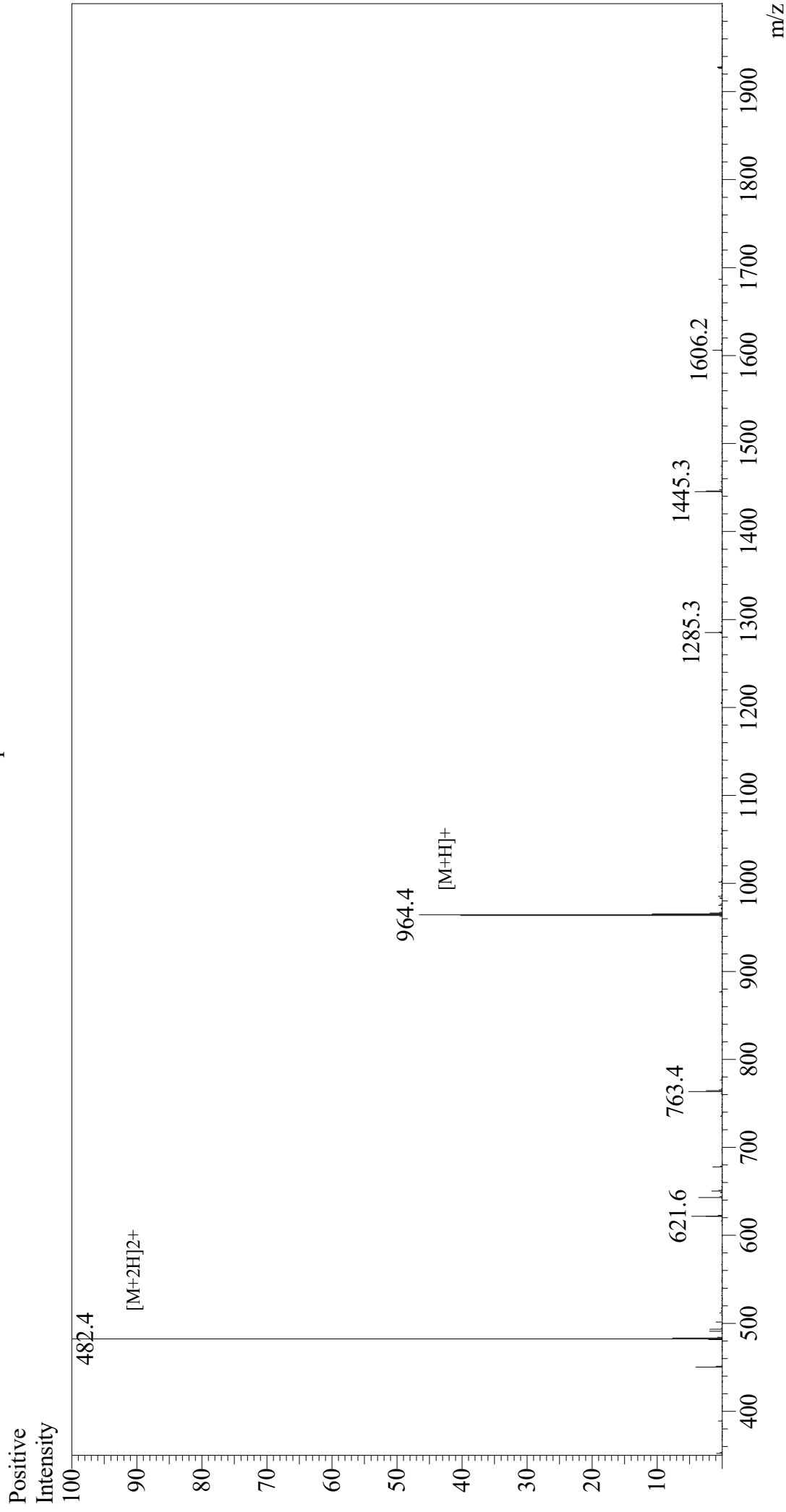


# Mass Spectrum



## Sample Information

Month-Day Processed : 04/30/21  
Time Processed : 7:16:35  
Injection Volume : 0.4  
Sample Name : OVA Peptide (257-264)  
Cat. No. : RP10611  
Lot. No. : E9389421D  
Theoretical MW : 963.13  
Observed MW : 962.8

Interface : ESI  
Nebulizing Gas Flow : 1.5L/min  
CDL Temp : 250  
Block Temp : 200

Equipment : GK11010007  
Interface Bias : +4.5 kV  
Drying Gas Flow : 5 L/min  
T.Flow : 0.2 ml/min  
B.conc : 50% H2O/50% MeOH