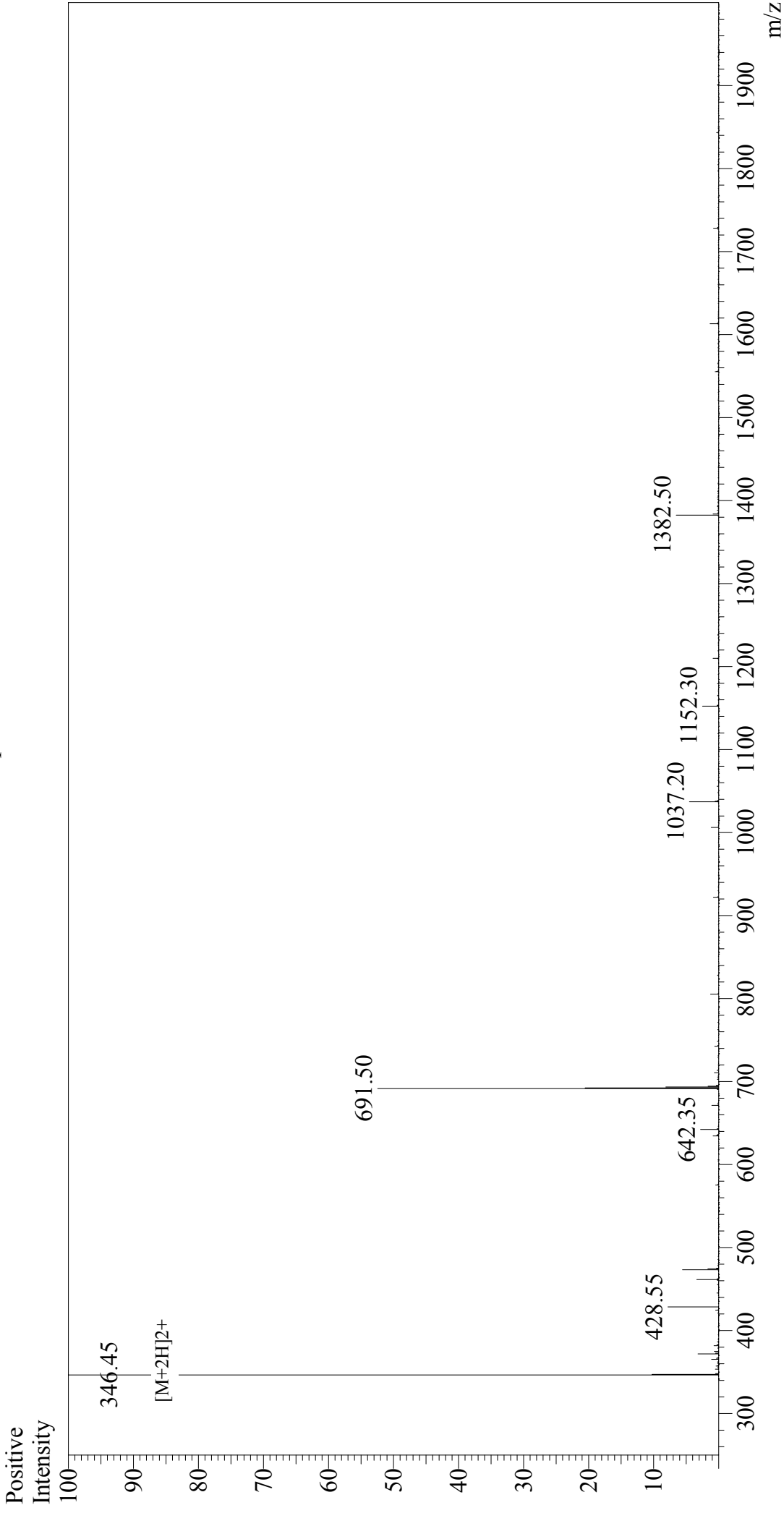


Mass Spectrum



Sample Information

Acquired by : Gary
Month-Day Processed : 01/27/18
Time Processed : 16:08:07
Injection Volume : 0.2
Sample Name : GRGDSPC
Cat. No. : RP20283
Lot. No. : PE1641801
Theoretical MW : 689.73
Observed MW : 690.90

Interface : ESI
Nebulizing Gas Flow : 1.5L/min
CDL Temp : 250°C
Block Temp : 200°C

Interface Bias
Drying Gas Flow
T.Flow
B.conc

: +4.5 kV
: 5 L/min
: 0.2 ml/min
: 50%H₂O/50%MeOH