

Sample Name :HA Peptide  
 Cat No :RP11735  
 Lot No :E5831820L  
 Time Processed :1:41:42  
 Month-Day-Year Processed :12/23/2020

Pump A : 0.065% trifluoroacetic in 100% water (v/v)  
 Pump B : 0.05% trifluoroacetic in 100% acetonitrile (v/v)  
 Total Flow:1 ml/min  
 Wavelength:220 nm

<<LC Time Program>>

| Time  | Module     | Command | Value |
|-------|------------|---------|-------|
| 0.01  | Pumps      | B.Conc  | 5     |
| 25.00 | Pumps      | B.Conc  | 65    |
| 25.01 | Pumps      | B.Conc  | 95    |
| 27.00 | Pumps      | B.Conc  | 95    |
| 27.01 | Pumps      | B.Conc  | 5     |
| 35.00 | Pumps      | B.Conc  | 5     |
| 35.01 | Controller | Stop    |       |

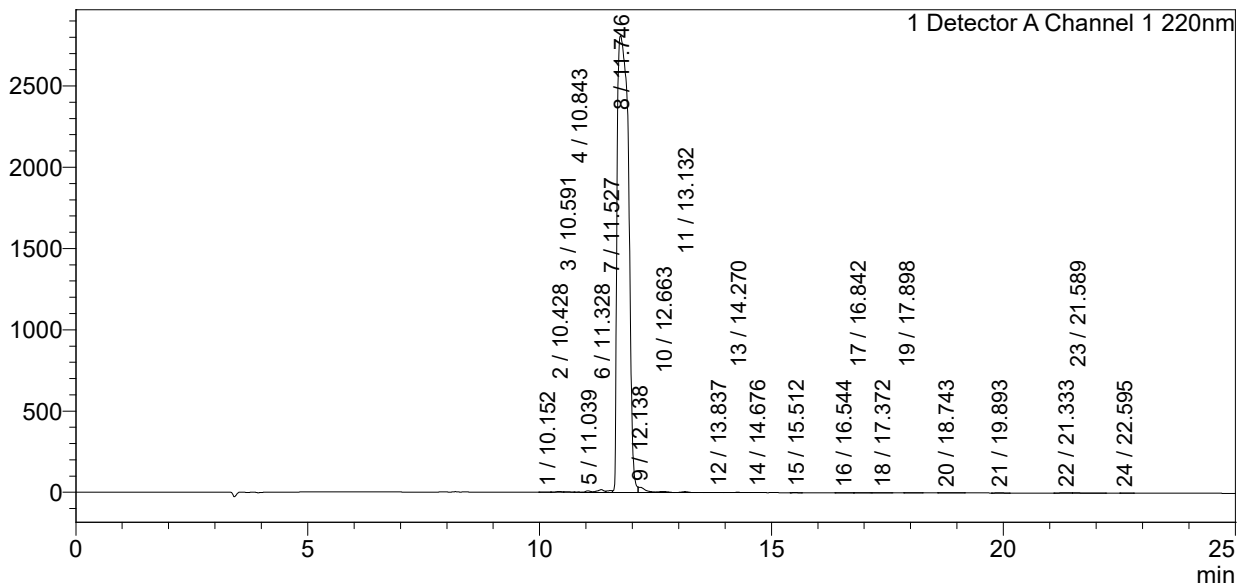
<<Column Performance>>

<Detector A>

Column :Inertsil ODS-3 4.6 x 250 mm  
 Equipment: SS-CM-0309

### <Chromatogram>

mV



### <Peak Table>

Detector A Channel 1 220nm

| Peak# | Ret. Time | Area     | Height  | Area%  |
|-------|-----------|----------|---------|--------|
| 1     | 10.152    | 3284     | 413     | 0.007  |
| 2     | 10.428    | 48820    | 5427    | 0.101  |
| 3     | 10.591    | 27071    | 3195    | 0.056  |
| 4     | 10.843    | 15767    | 2179    | 0.033  |
| 5     | 11.039    | 78443    | 9374    | 0.162  |
| 6     | 11.328    | 162146   | 16740   | 0.335  |
| 7     | 11.527    | 85271    | 10380   | 0.176  |
| 8     | 11.746    | 47418895 | 2810645 | 98.042 |
| 9     | 12.138    | 320891   | 31916   | 0.663  |
| 10    | 12.663    | 74640    | 5295    | 0.154  |
| 11    | 13.132    | 49237    | 4992    | 0.102  |
| 12    | 13.837    | 9057     | 563     | 0.019  |
| 13    | 14.270    | 22918    | 1919    | 0.047  |
| 14    | 14.676    | 2106     | 264     | 0.004  |
| 15    | 15.512    | 1709     | 248     | 0.004  |
| 16    | 16.544    | 1282     | 110     | 0.003  |

| Peak# | Ret. Time | Area     | Height  | Area%   |
|-------|-----------|----------|---------|---------|
| 17    | 16.842    | 1221     | 93      | 0.003   |
| 18    | 17.372    | 2843     | 264     | 0.006   |
| 19    | 17.898    | 2086     | 127     | 0.004   |
| 20    | 18.743    | 5724     | 427     | 0.012   |
| 21    | 19.893    | 1607     | 118     | 0.003   |
| 22    | 21.333    | 14283    | 779     | 0.030   |
| 23    | 21.589    | 14158    | 1211    | 0.029   |
| 24    | 22.595    | 2545     | 299     | 0.005   |
| Total |           | 48366002 | 2906977 | 100.000 |