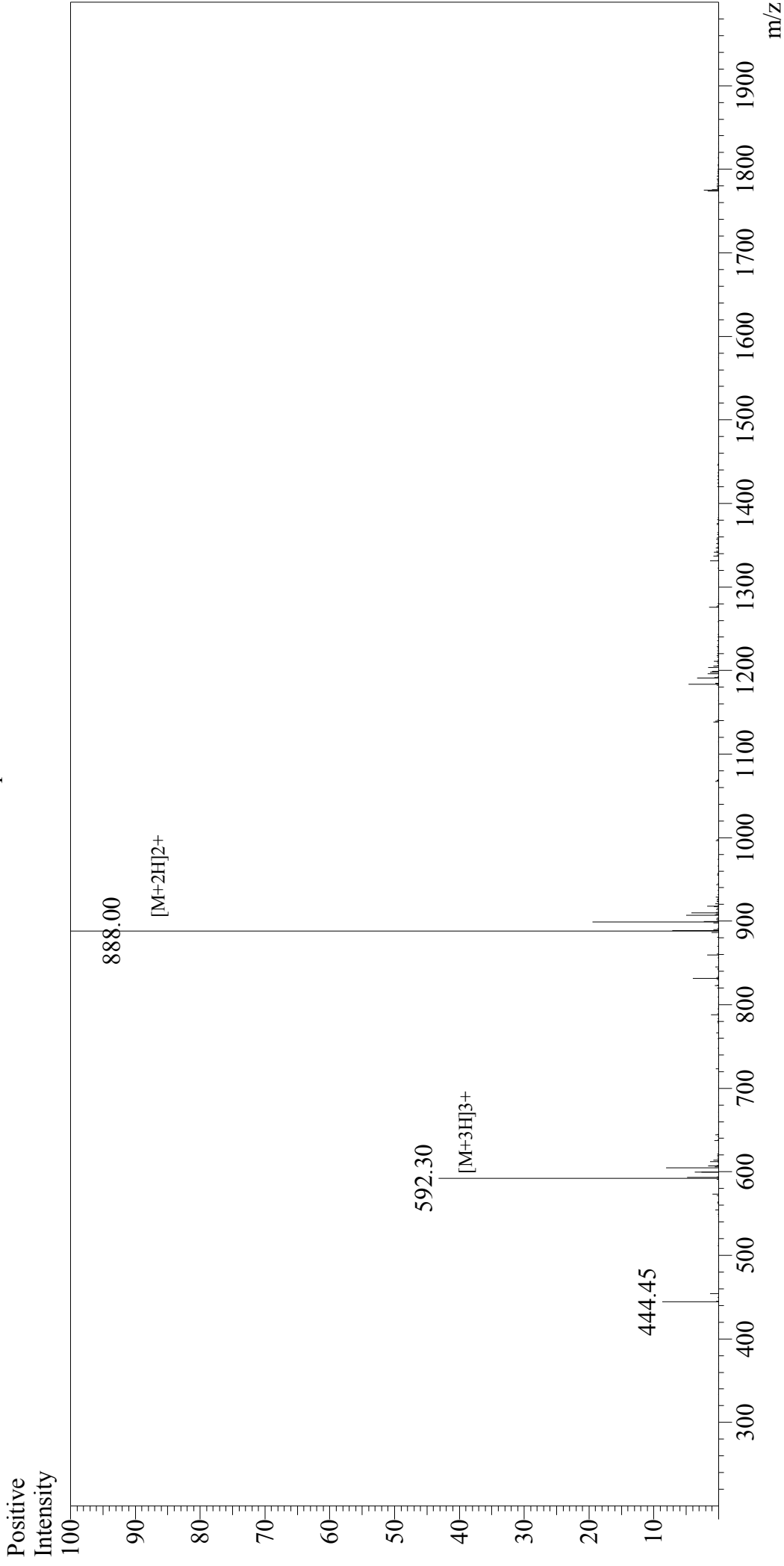


# Mass Spectrum



## Sample Information

User : Gary  
Month-Day Processed : 06/01/17  
Time Processed : 12:27:14  
Injection Volume : 0.2  
Sample Name : OVA Peptide (323-339)  
Cat No. : RP10610  
Lot No. : PE5001802  
Theoretical MW : 1773.91  
Observed MW : 1774.00

Interface : ESI  
Nebulizing Gas Flow : 1.5L/min  
CDL Temp : 250°C  
Block Temp : 200°C

Interface Bias : +4.5kV  
Drying Gas Flow : 5 L/min  
T.Flow : 0.2ml/min  
B.conc : 50%H2O/50%MeOH