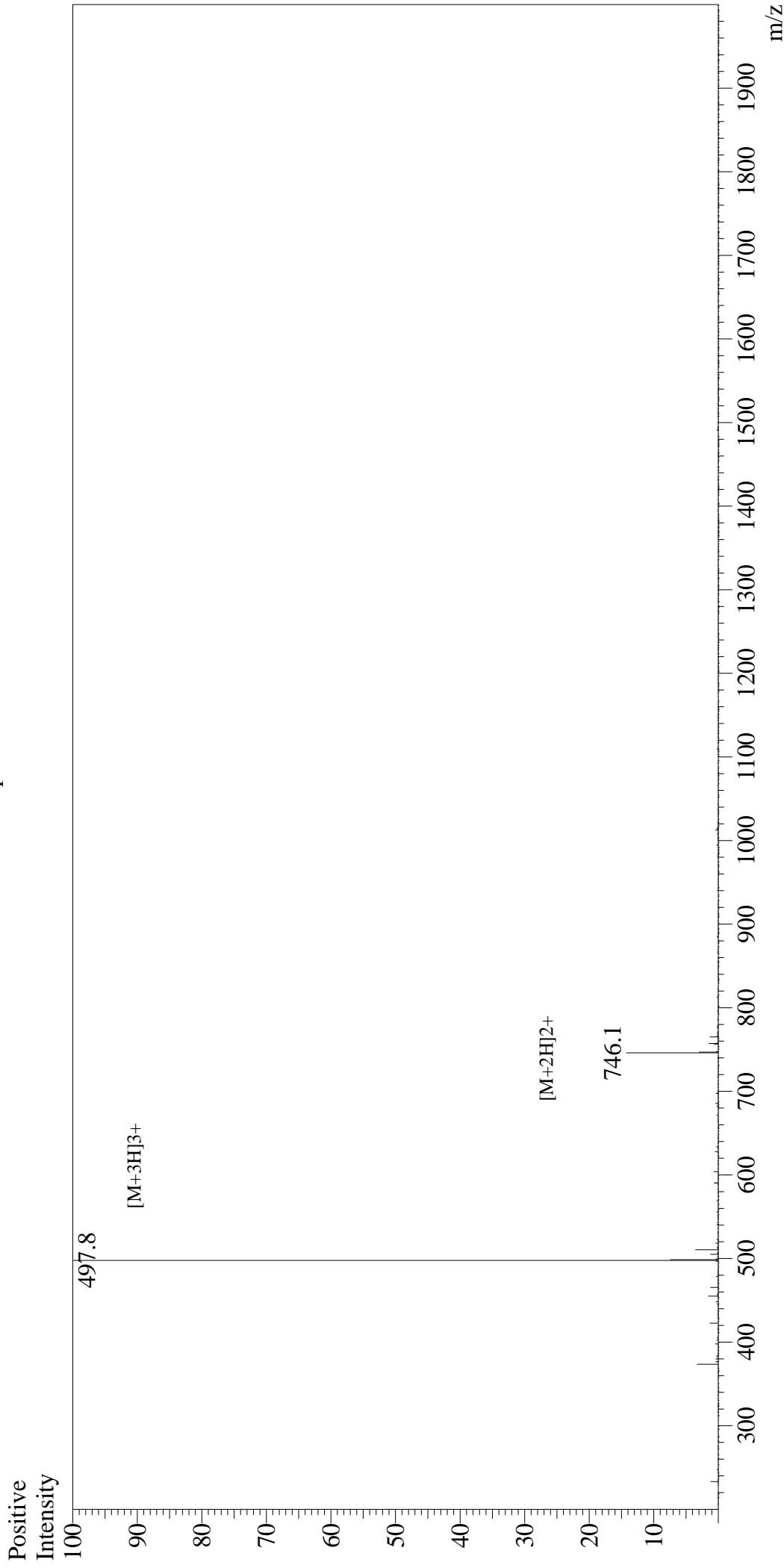


Mass Spectrum



Sample Information

User : Gary
Month-Day Processed : 03/06/19
Time Processed : 18:03:19
Injection Volume : 0.2
Sample Name : SV40 T-Ag-derived NLS peptide
Cat No. : RP20513
Lot No. : PE9021902
Theoretical MW : 1490.80
Observed MW : 1490.4

Equipment : GK11010007
Interface Bias : +4.5kV
Drying Gas Flow : 5 L/min
T.Flow : 0.2ml/min
B.conc : 50%H2O/50%MeOH

Interface : ESI
Nebulizing Gas Flow : 1.5L/min
CDL Temp : 250
Block Temp : 200