

Sample Name: OVA Peptide (257-264)
 Cat. No. : RP10611
 Lot. No. : E5697719F
 Time Processed :10:00:57
 Month-Day-Year Processed :06/26/2019
 Pump A : 0.065% trifluoroacetic in 100% water (v/v)
 Pump B : 0.05% trifluoroacetic in 100% acetonitrile (v/v)
 Total Flow:1 ml/min
 Wavelength:220 nm

| Time | Unit | Command | Value | Comment |
|-------|------------|---------------|-------|---------|
| 0.01 | Pumps | Pump A B.Conc | 5 | |
| 25.00 | Pumps | Pump A B.Conc | 65 | |
| 25.01 | Pumps | Pump A B.Conc | 95 | |
| 27.00 | Pumps | Pump A B.Conc | 95 | |
| 27.01 | Pumps | Pump A B.Conc | 5 | |
| 35.00 | Pumps | Pump A B.Conc | 5 | |
| 35.01 | Controller | Stop | | |

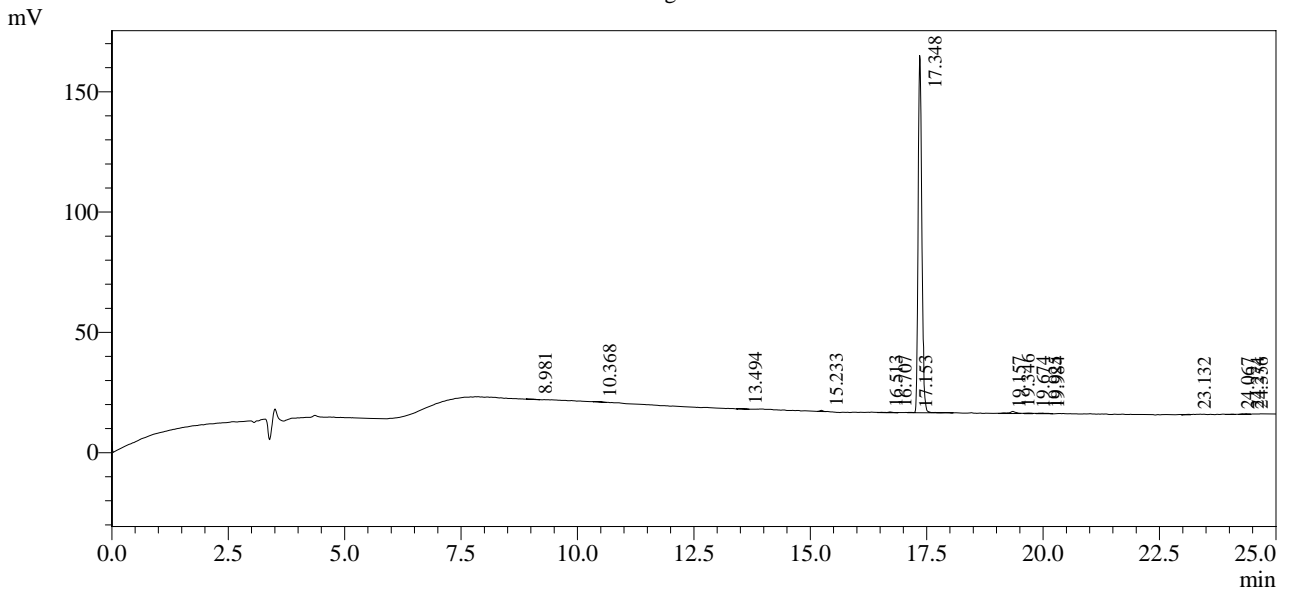
<<Column Performance>>

<Detector A>

Column : Inertsil ODS-3 4.6 x 250 mm

Equipment: GR1101009

Chromatogram



1 Det.A Ch1 / 220nm

Peak Table

Detector A Ch1 220nm

| Peak# | Ret. Time | Area | Height | Area % |
|-------|-----------|--------|--------|---------|
| 1 | 8.981 | 1293 | 105 | 0.151 |
| 2 | 10.368 | 1227 | 95 | 0.143 |
| 3 | 13.494 | 1083 | 116 | 0.126 |
| 4 | 15.233 | 2085 | 459 | 0.244 |
| 5 | 16.513 | 1340 | 170 | 0.157 |
| 6 | 16.707 | 1684 | 278 | 0.197 |
| 7 | 17.153 | 1065 | 160 | 0.124 |
| 8 | 17.348 | 826475 | 148473 | 96.559 |
| 9 | 19.157 | 1921 | 286 | 0.224 |
| 10 | 19.346 | 7862 | 863 | 0.918 |
| 11 | 19.674 | 2049 | 238 | 0.239 |
| 12 | 19.925 | 1189 | 200 | 0.139 |
| 13 | 19.984 | 1745 | 236 | 0.204 |
| 14 | 23.132 | 1466 | 172 | 0.171 |
| 15 | 24.067 | 1159 | 130 | 0.135 |
| 16 | 24.274 | 1013 | 191 | 0.118 |
| 17 | 24.356 | 1273 | 186 | 0.149 |
| Total | | 855928 | 152358 | 100.000 |