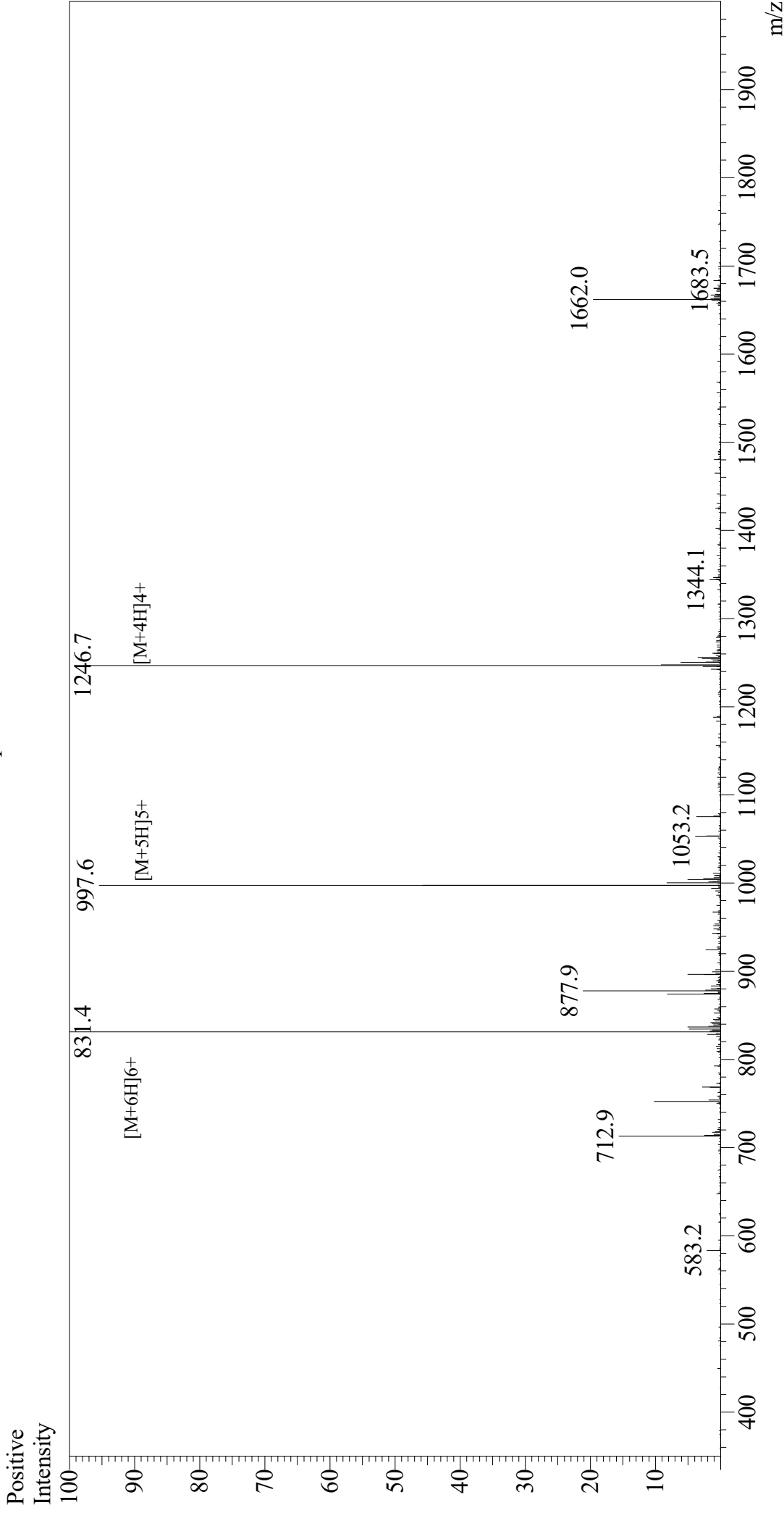


# Mass Spectrum



Sample Information  
 Month-Day Processed : 04/13/21  
 Time Processed : 9:02:53 PM  
 Injection Volume : 0.4  
 Sample Name : Gastric Inhibitory Peptide (GIP), human  
 Cat. No. : RP10795  
 Lot. No. : E3018521D  
 Theoretical MW : 4983.60  
 Observed MW : 4982.4

Interface : ESI  
 Nebulizing Gas Flow : 1.5L/min  
 CDL Temp : 250  
 Block Temp : 200

Equipment : GK11010007  
 Interface Bias : +4.5 kV  
 Drying Gas Flow : 5 L/min  
 T.Flow : 0.2 ml/min  
 B.conc : 50% H2O/50% MeOH