

Sample Name: Exendin-4  
 Cat No. : RP10874  
 Lot No. : E0427320B  
 Time Processed: 5:39:21 PM  
 Month-Day-Year Processed :02/12/2020

Pump A : 0.065% trifluoroacetic in 100% water (v/v)  
 Pump B : 0.05% trifluoroacetic in 100% acetonitrile (v/v)  
 Total Flow: 1 ml/min  
 Wavelength: 220 nm

<<LC Time Program>>

| Time  | Module     | Command       | Value |
|-------|------------|---------------|-------|
| 0.01  | Pumps      | Pump A B.Conc | 25    |
| 25.00 | Pumps      | Pump A B.Conc | 85    |
| 25.01 | Pumps      | Pump A B.Conc | 95    |
| 32.00 | Pumps      | Pump A B.Conc | 95    |
| 32.01 | Pumps      | Pump A B.Conc | 25    |
| 40.00 | Pumps      | Pump A B.Conc | 25    |
| 40.00 | Controller | Stop          |       |

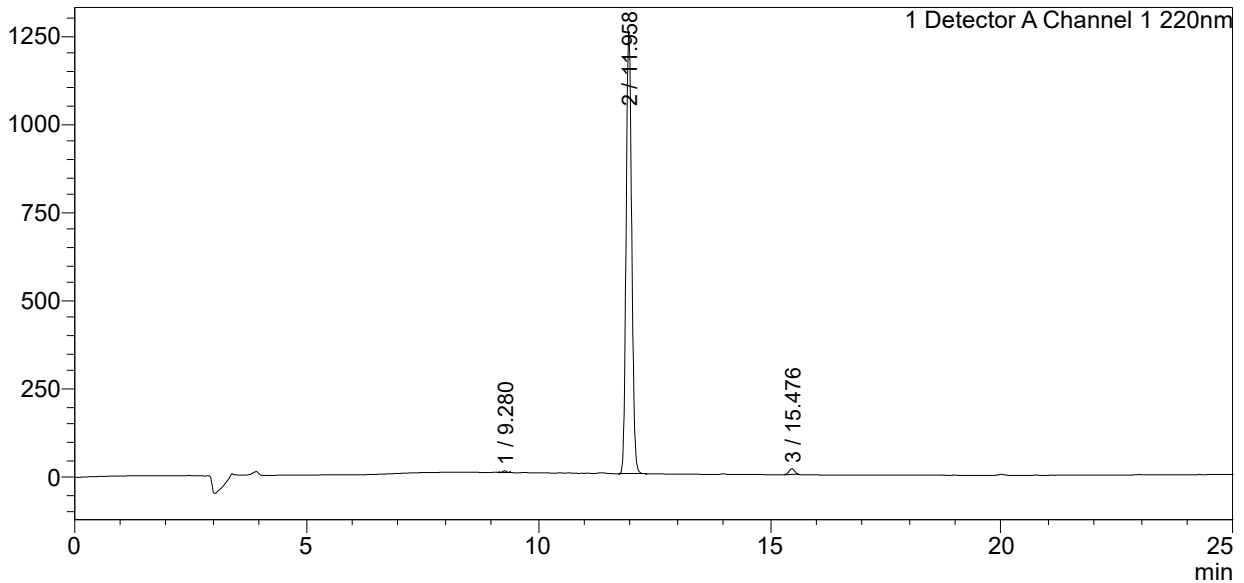
<<Column Performance>>

<Detector A>

Column : Alltima™ C18 4.6 x 250 mm  
 Equipment: ZJ19010325

### <Chromatogram>

mV



### <Peak Table>

Detector A Channel 1 220nm

| Peak# | Ret. Time | Area     | Height  | Area%   |
|-------|-----------|----------|---------|---------|
| 1     | 9.280     | 26810    | 5054    | 0.252   |
| 2     | 11.958    | 10502390 | 1248401 | 98.537  |
| 3     | 15.476    | 129154   | 15754   | 1.212   |
| Total |           | 10658354 | 1269209 | 100.000 |