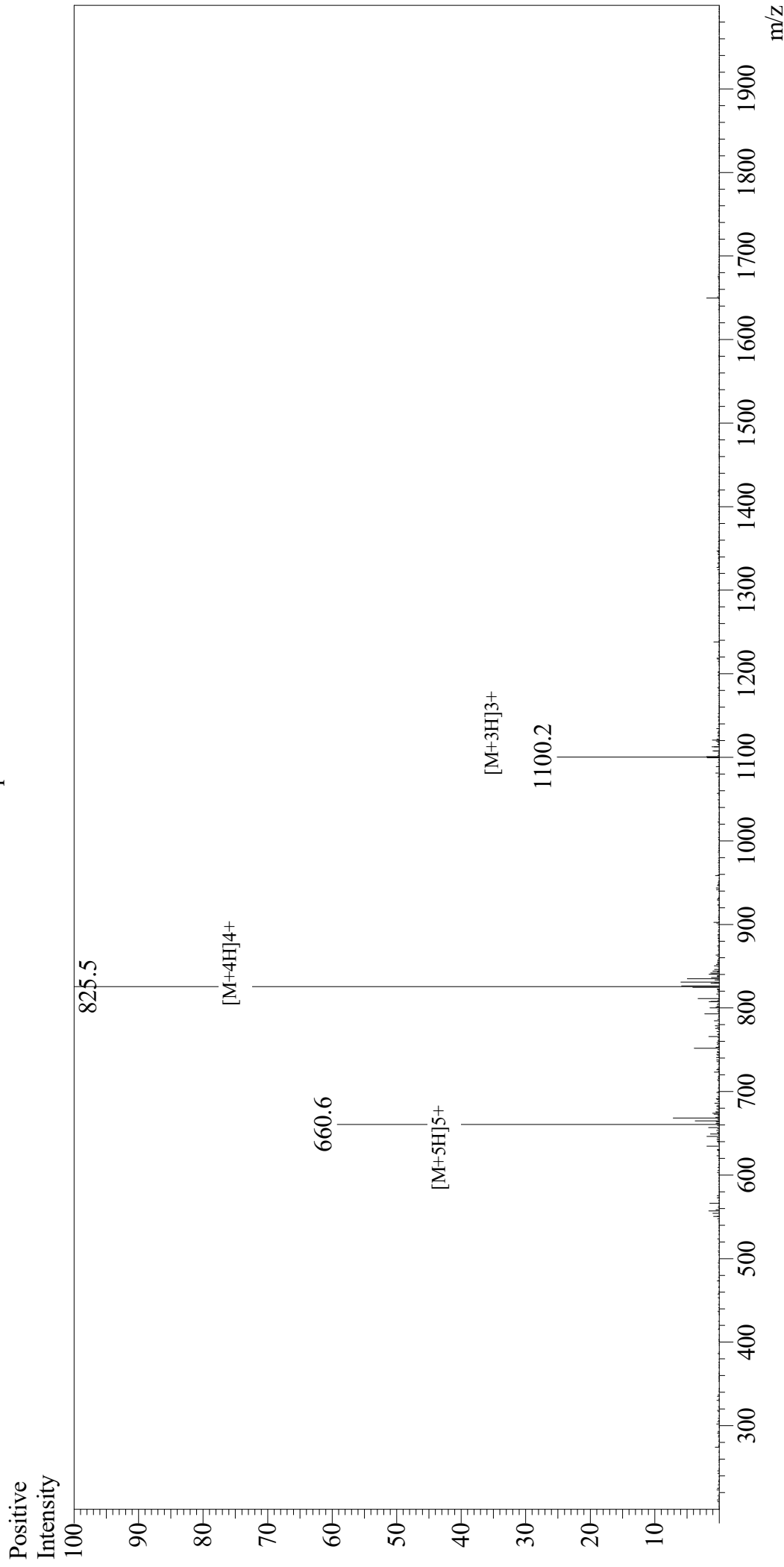


Mass Spectrum



Sample Information

User : Gary
Month-Day Processed : 06/01/19
Time Processed : 10:25:50 AM
Injection Volume : 0.3
Sample Name : Glucagon-Like Peptide (GLP) I (7-36), amide, human
Cat No. : RP10773
Lot No. : PE2011905
Theoretical MW : 3297.50
Observed MW : 3298.0

Interface : ESI
Nebulizing Gas Flow : 1.5L/min
CDL Temp : 250
Block Temp : 200

Equipment : GK11010007
Interface Bias : +4.5kV
Drying Gas Flow : 5 L/min
T.Flow : 0.2ml/min
B.conc : 50%H2O/50%MeOH