

Sample Name : LCMV gp33-41  
 Cat. No. : RP20257  
 Lot. No. : PE2241705

Pump A : 0.065% trifluoroacetic in 100% water (v/v)  
 Pump B : 0.05% trifluoroacetic in 100% acetonitrile (v/v)  
 Total Flow:1 ml/min  
 Wavelength:220 nm

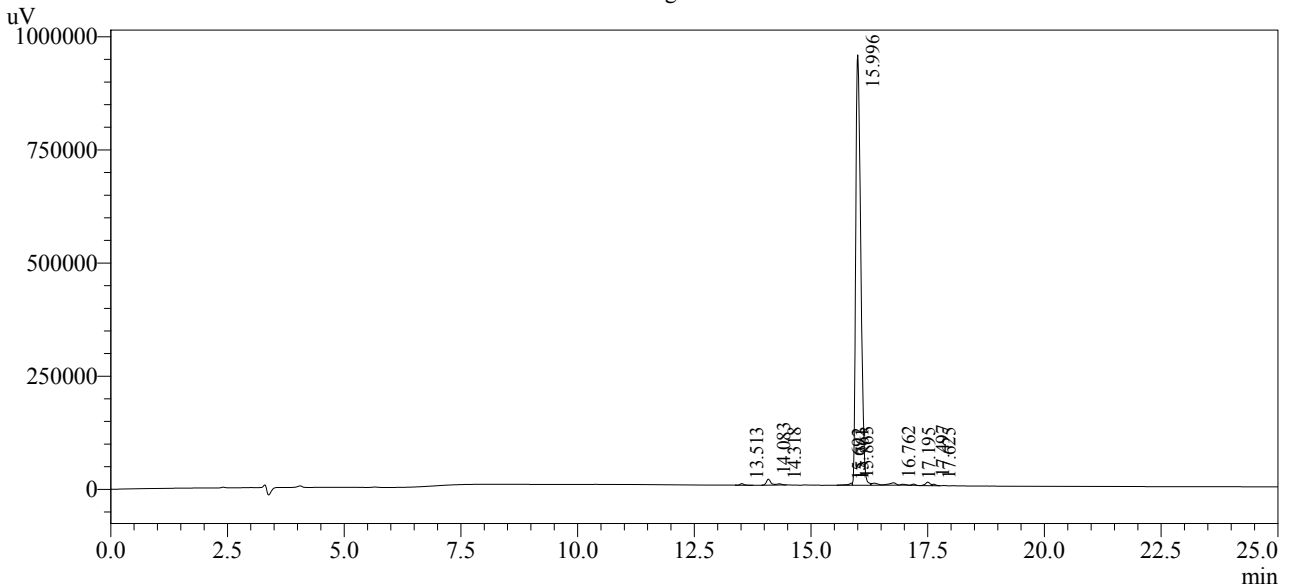
| Time  | Unit       | Command       | Value | Comment |
|-------|------------|---------------|-------|---------|
| 0.01  | Pumps      | Pump A B.Conc | 5     |         |
| 25.00 | Pumps      | Pump A B.Conc | 65    |         |
| 25.01 | Pumps      | Pump A B.Conc | 95    |         |
| 31.00 | Pumps      | Pump A B.Conc | 95    |         |
| 31.01 | Pumps      | Pump A B.Conc | 5     |         |
| 40.00 | Pumps      | Pump A B.Conc | 5     |         |
| 40.01 | Controller | Stop          |       |         |

<<Column Performance>>

<Detector A>

Column : Alltima™ C18 4.6 x 250 mm

Chromatogram



1 Det.A Ch1 / 220nm

Peak Table

Detector A Ch1 220nm

| Peak# | Ret. Time | Area    | Height | Area %  |
|-------|-----------|---------|--------|---------|
| 1     | 13.513    | 19161   | 3539   | 0.256   |
| 2     | 14.083    | 85675   | 13305  | 1.144   |
| 3     | 14.318    | 19762   | 2650   | 0.264   |
| 4     | 15.692    | 5273    | 827    | 0.070   |
| 5     | 15.761    | 7049    | 1417   | 0.094   |
| 6     | 15.863    | 19192   | 4571   | 0.256   |
| 7     | 15.996    | 7139851 | 951042 | 95.368  |
| 8     | 16.762    | 107020  | 5139   | 1.429   |
| 9     | 17.195    | 11817   | 2591   | 0.158   |
| 10    | 17.497    | 56366   | 7995   | 0.753   |
| 11    | 17.625    | 15465   | 3190   | 0.207   |
| Total |           | 7486629 | 996266 | 100.000 |