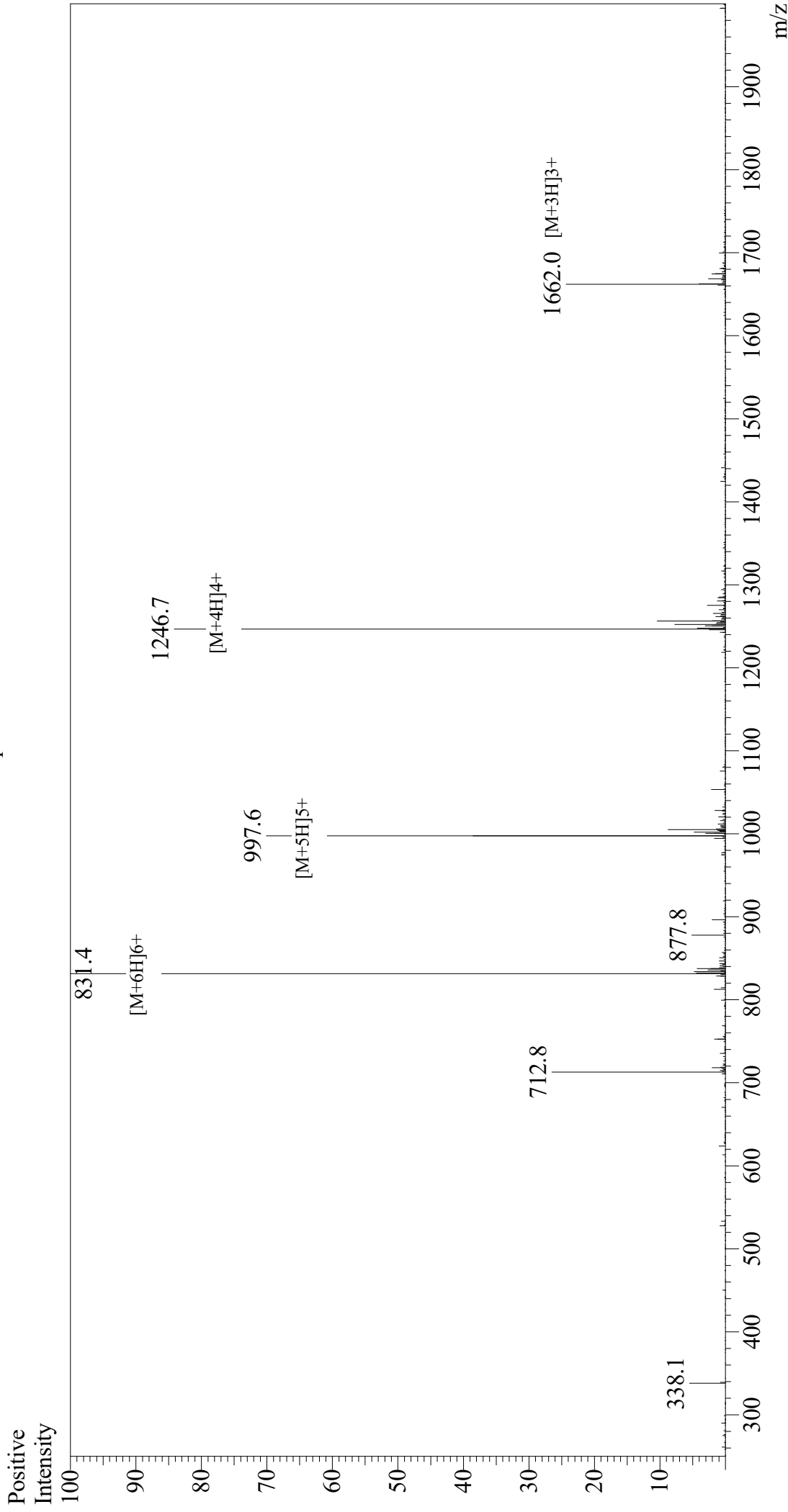


Mass Spectrum



Sample Information

Month-Day Processed : 03/26/21
Time Processed : 9:56:37 PM
Injection Volume : 0.4
Sample Name : Gastric Inhibitory Peptide (GIP), human
Cat No. : RP10795
Lot No. : E7143721C
Theoretical MW : 4983.60
Observed MW : 4982.4

Interface

Interface : ESI
Nebulizing Gas Flow : 1.5L/min
CDL Temp : 250
Block Temp : 200

Equipment

Equipment : GK11010007
Interface Bias : +3.5 kV
Drying Gas Flow : 5 L/min
T.Flow : 0.2 ml/min
B.conc : 50% H₂O/50% MeOH