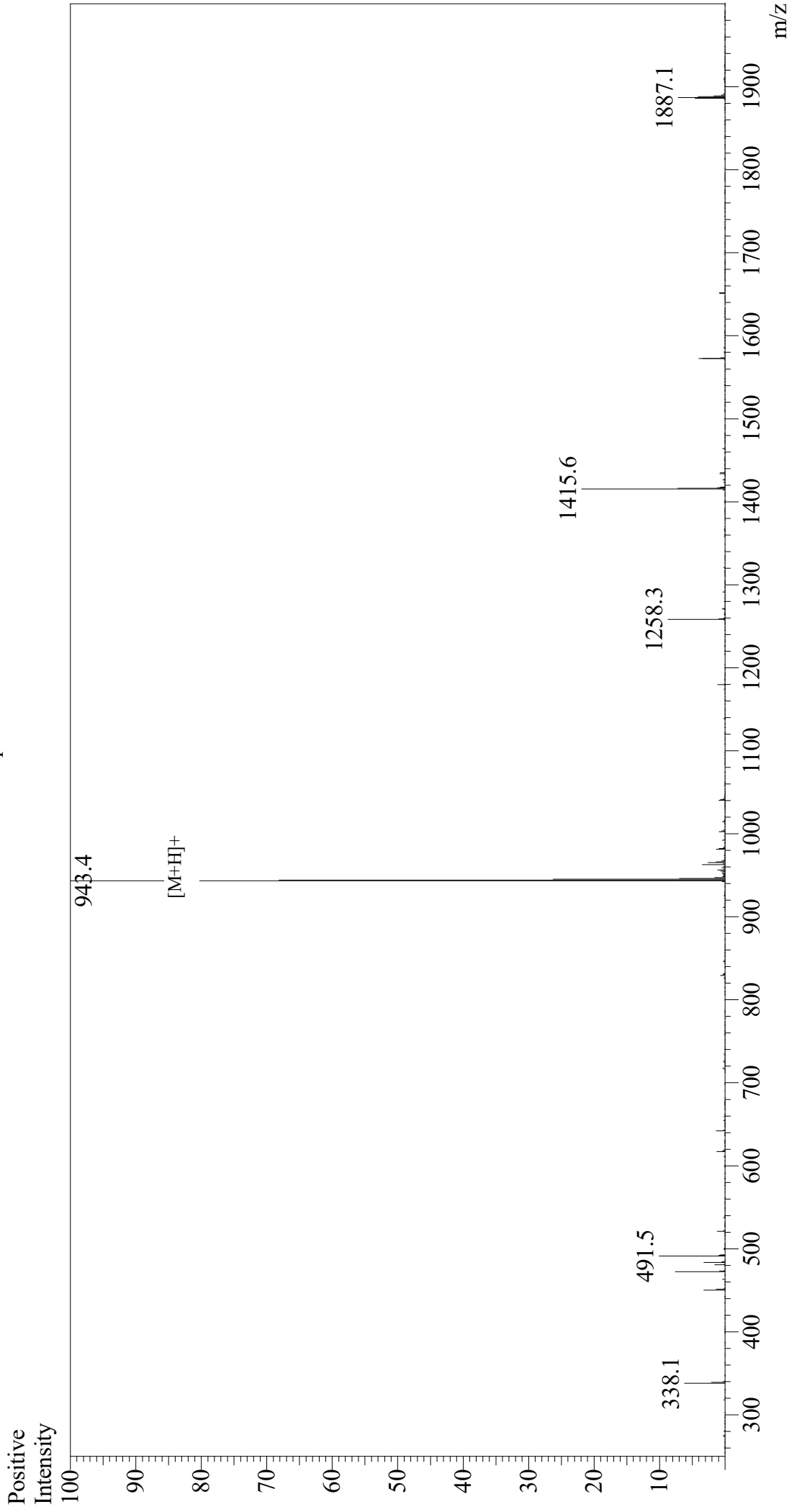


Mass Spectrum



Sample Information

Month-Day Processed : 03/26/21
Time Processed : 9:57:51 PM
Injection Volume : 0.4
Sample Name : CEF20
Cat No. : RP111781
Lot No. : E7141521C
Theoretical MW : 943.18
Observed MW : 942.4

Interface : ESI
Nebulizing Gas Flow : 1.5L/min
CDL Temp : 250
Block Temp : 200

Equipment : GK11010007
Interface Bias : +3.5 kV
Drying Gas Flow : 5 L/min
T.Flow : 0.2 ml/min
B.conc : 50%H2O/50%MeOH