

Sample Name: Glucagon-Like Peptide (GLP) I (7-36), amide, human  
 Cat No. : RP10773  
 Lot No. : E6216921A  
 Time Processed : 15:11:08  
 Month-Day-Year Processed : 02/02/2021

Pump A : 0.065% trifluoroacetic in 100% water (v/v)  
 Pump B : 0.05% trifluoroacetic in 100% acetonitrile (v/v)  
 Total Flow: 1 ml/min  
 Wavelength: 220 nm

<<LC Time Program>>

Time	Module	Command	Value
0.01	Pumps	Pump B Conc.	5
25.00	Pumps	Pump B Conc.	65
25.01	Pumps	Pump B Conc.	95
27.00	Pumps	Pump B Conc.	95
27.01	Pumps	Pump B Conc.	5
32.00	Pumps	Pump B Conc.	5
32.01	Controller	Stop	

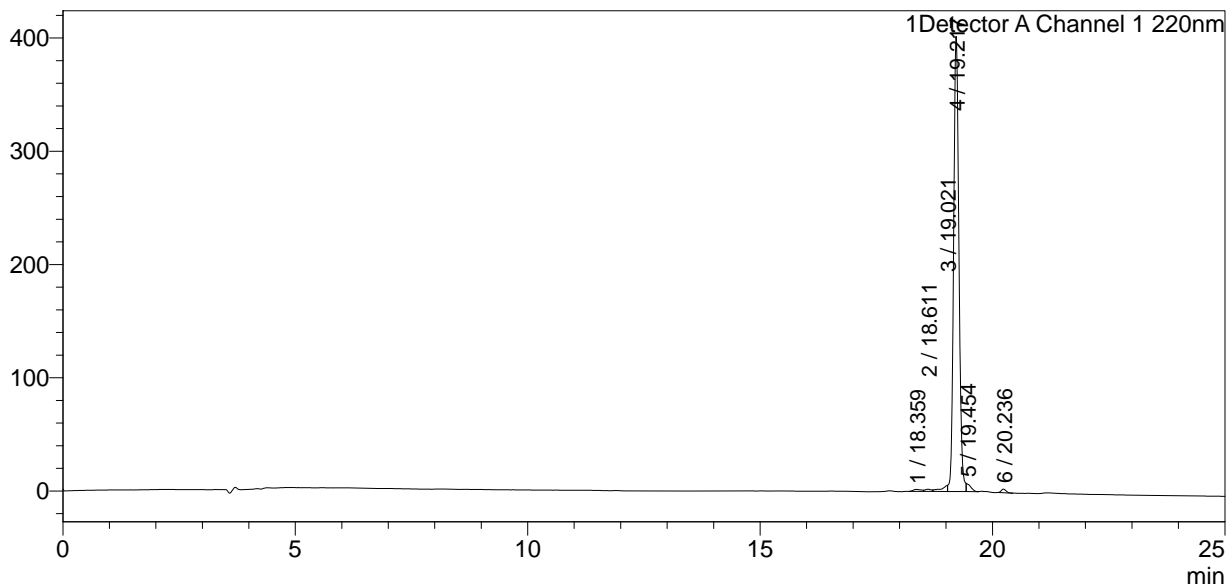
<<Column Performance>>

<Detector A>

Column : Inertsil ODS-3 4.6 x 250 mm  
 Equipment: GK12010012

<Chromatogram>

mV



<Peak Table>

Detector A Channel 1 220nm

Peak#	Ret. Time	Area	Height	Area%
1	18.359	20909	1718	0.627
2	18.611	18455	1934	0.553
3	19.021	50307	5117	1.507
4	19.217	3179144	398607	95.263
5	19.454	45727	6969	1.370
6	20.236	22684	3193	0.680
Total		3337226	417538	100.000