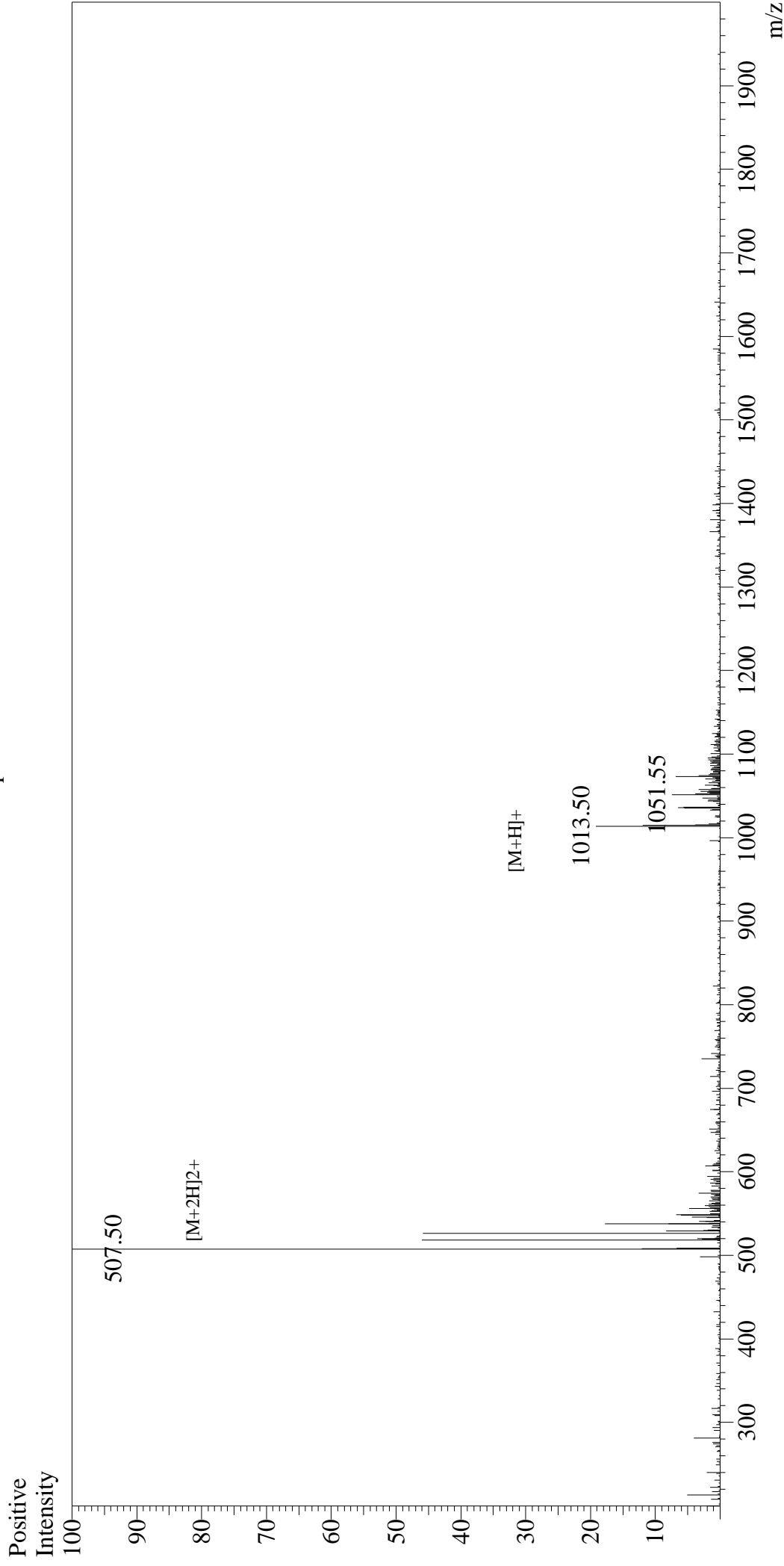


# Mass Spectrum



## Sample Information

User :	Gary	Interface :	ESI	Interface Bias :	+4.5kV
Month-Day Processed :	02/28/17	Nebulizing Gas Flow :	1.5L/min	Drying Gas Flow :	5 L/min
Time Processed :	8:53:28	CDL Temp :	250°C	T.Flow :	0.2ml/min
Injection Volume :	0.2	Block Temp :	200°C	B.conc :	50%H <sub>2</sub> O/50%MeOH
Sample Name :	DYKDDDDK Peptide				
Cat No. :	RP10586				
Lot No. :	PE3091702				
Theoretical MW :	1012.97				
Observed MW :	1013.00				