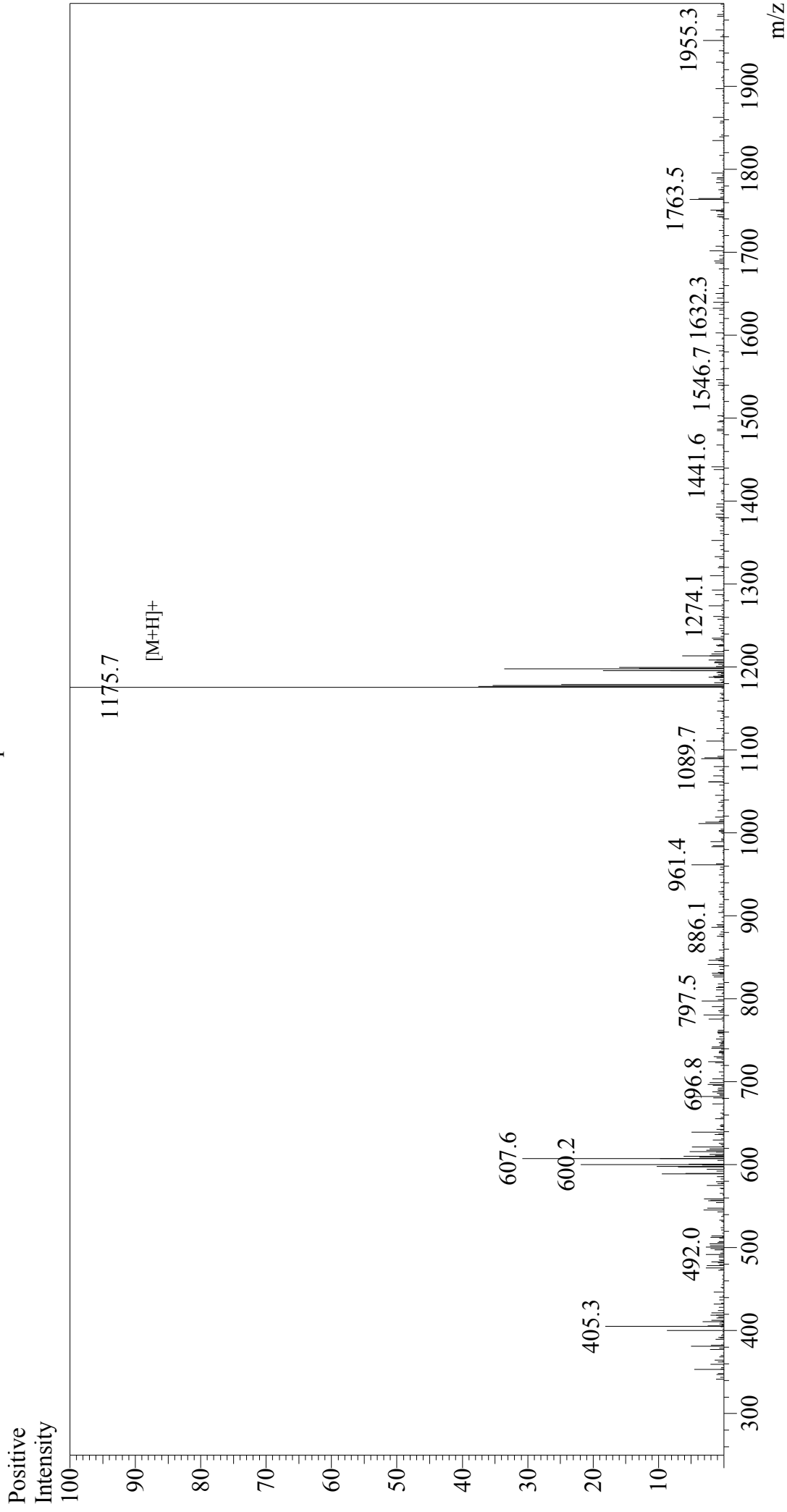


Mass Spectrum



Sample Information

Acquired by : Gary
Month-Day Processed : 08/01/18
Time Processed : 11:15:39
Injection Volume : 0.2
Sample Name : mTRP-2(180-188)
Cat. No. : RP20250
Lot. No. : PE6761807
Theoretical MW : 1175.34
Observed MW : 1174.7

Interface : ESI
Nebulizing Gas Flow : 1.5L/min
CDL Temp : 250°C
Block Temp : 200°C

Interface Bias : +4.5 kV
Drying Gas Flow : 5 L/min
T.Flow : 0.2 ml/min
B.conc : 50% H2O/50% MeOH