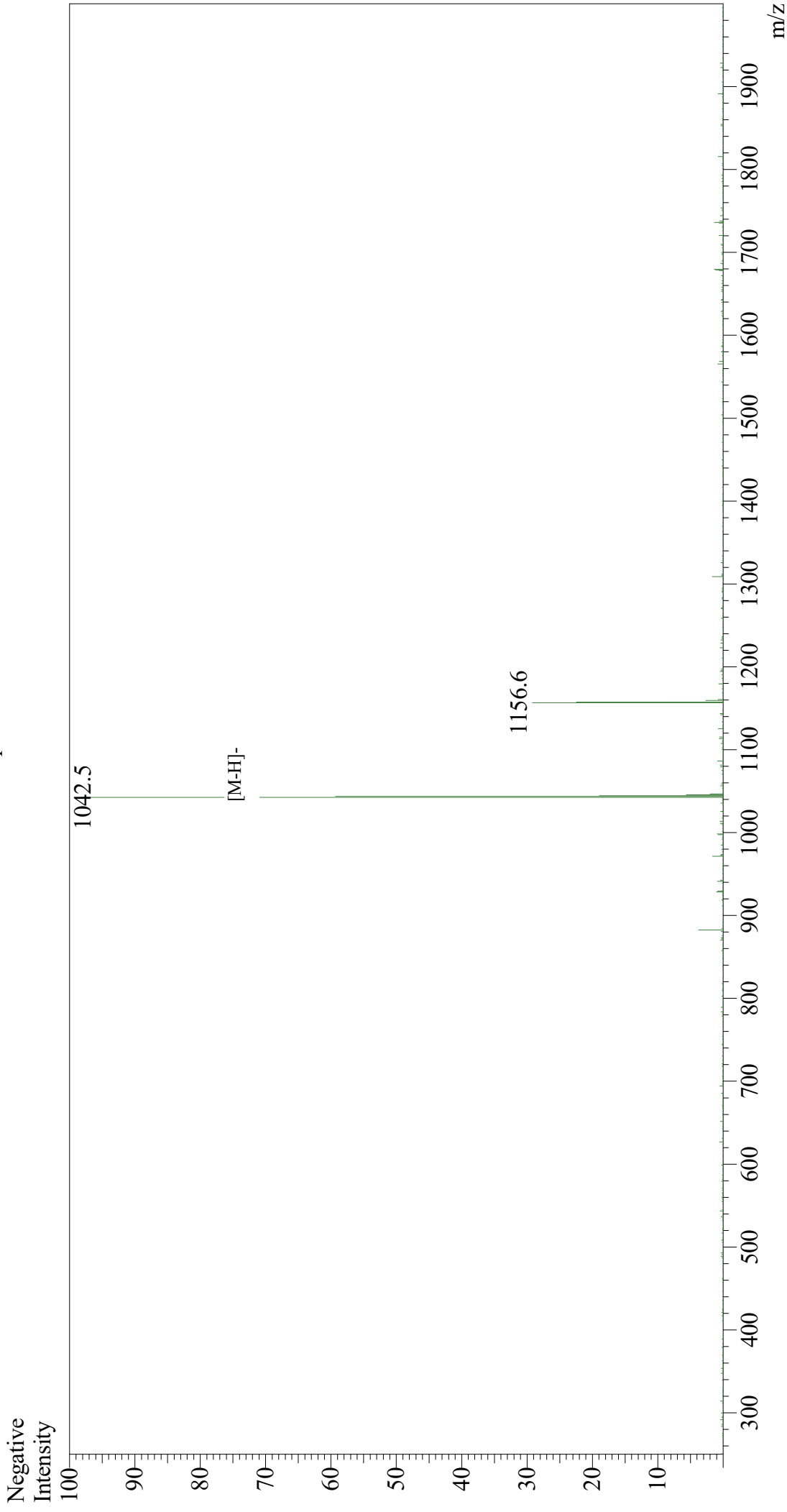


# Mass Spectrum



## Sample Information

User : Gary  
Month-Day Processed : 05/02/19  
Time Processed : 01:25:43 PM  
Injection Volume : 0.3  
Sample Name : LCMVgp33-41  
Cat No. : RP20257  
Lot No. : PE6841904  
Theoretical MW : 1044.25  
Observed MW : 1043.5

## Interface

Interface : ESI  
Nebulizing Gas Flow : 1.5L/min  
CDL Temp : 250  
Block Temp : 200

## Equipment

Equipment : GK11010007  
Interface Bias : -3.5 kV  
Drying Gas Flow : 5 L/min  
T.Flow : 0.2 ml/min  
B.conc : 50%H2O/50%MeOH