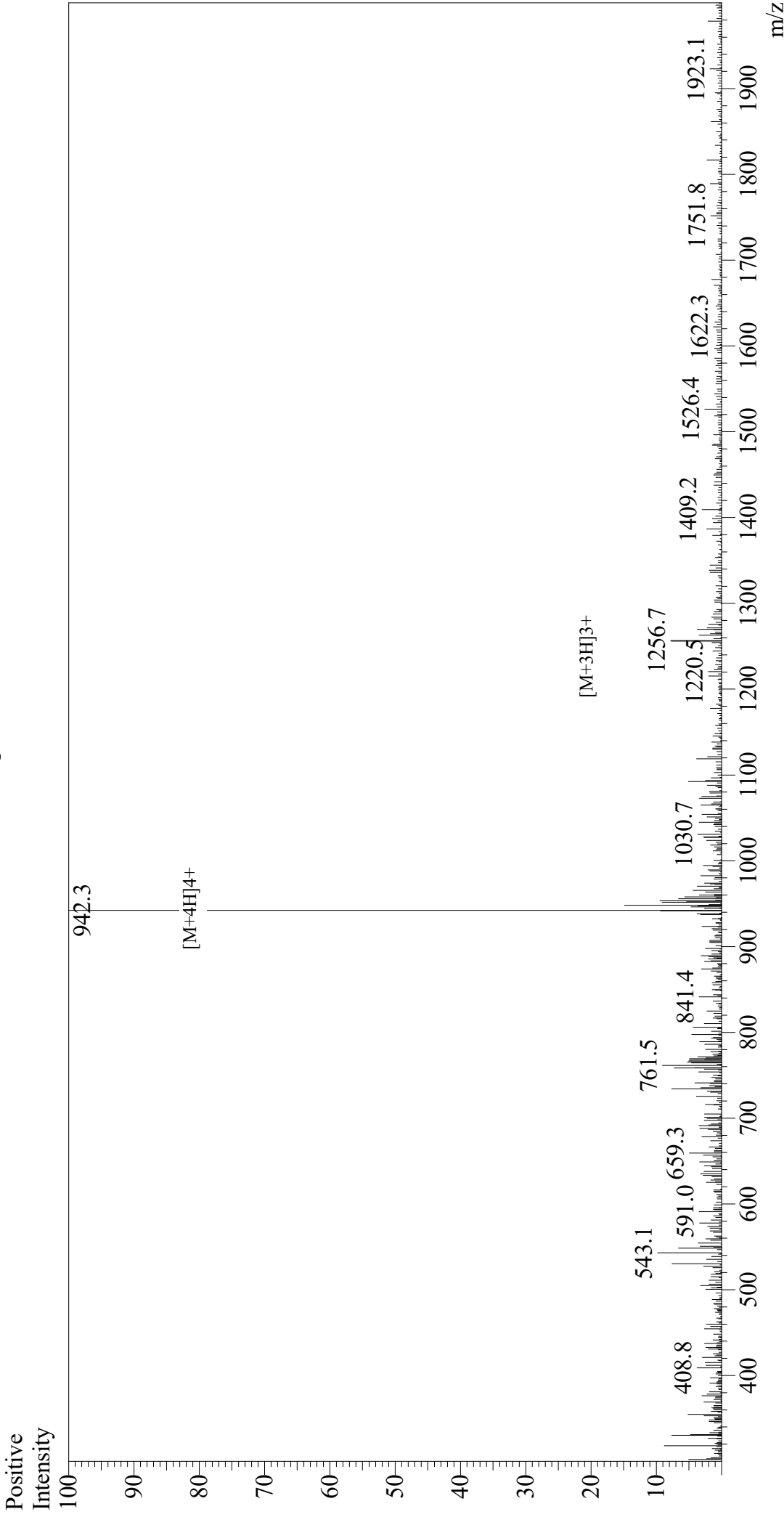


Mass Spectrum



Sample Information

Acquired by : Gary
 Month-Day Processed : 03/03/20
 Time Processed : 04:56:36 PM
 Injection Volume : 0.3
 Sample Name : Glucagon-Like Peptide (GLP) II, human
 Cat. No. : RP10769
 Lot. No. : E7236720B
 Theoretical MW : 3766.20
 Observed MW : 3765.2

Interface : ESI
 Nebulizing Gas Flow : 1.5L/min
 CDL Temp : 250
 Block Temp : 200

Equipment : GK11010007
 Interface Bias : +4.5 kV
 Drying Gas Flow : 5 L/min
 T.Flow : 0.2 ml/min
 B.conc : 50% H2O/50% MeOH